

---

# ARTS-4770

Fanless In-Vehicle Surveillance with Intel® Core i7-3517UE

## User's Manual

Version 1.0

P/N: 4012477000100P

2014.05



---

## Revision History

Version	Release Time	Description
1.0	May 2014	Initial release

<b>Preface</b> .....	<b>iii</b>
Copyright Notice .....	iii
Declaration of Conformity .....	iii
CE .....	iii
FCC Class A.....	iii
RoHS .....	iv
SVHC / REACH .....	iv
Important Safety Instructions .....	v
Warning .....	v
Replacing Lithium Battery.....	vi
Technical Support .....	vi
Warranty .....	vii
<b>Chapter 1 - Introduction</b> .....	<b>1</b>
1.1. Product Highlights .....	2
1.2. About this Manual .....	2
1.3. Specifications .....	3
1.5. Ordering Information.....	5
1.5.1. Optional Accessories .....	5
1.5.2. Configure-to-Order Service.....	5
<b>Chapter 2 - Getting Started</b> .....	<b>7</b>
2.1. Dimensions.....	8
2.2. Take A Tour .....	9
2.3. Driver Installation Notes .....	11
<b>Chapter 3 - System Configuration</b> .....	<b>13</b>
3.1. Board Layout .....	14
3.1.1. CPU Boards .....	14
3.1.2. Carrier Board .....	16
3.2. Jumpers and Connectors .....	18
3.2.1. Jumpers .....	18
3.2.2. Connectors.....	21
<b>Chapter 4 - Installation and Maintenance</b> .....	<b>43</b>
4.1. Install Hardware.....	44
4.1.1. Open the Computer .....	44
4.1.2. Install/uninstall SIM Card .....	45
4.1.3. Install SATA HDD/SSD .....	47
4.1.4. Disassemble SSD bracket .....	49
4.1.5. Install Memory Module on CPU Module .....	50
4.2. Mount the Computer.....	51
4.3. Wire DC-in Power Source.....	53
4.3.1 Vehicle Application .....	53
4.3.2 Automation Application.....	54

**Chapter 5 - BIOS ..... 55**

- 5.1. ARTS-4770 BIOS..... 58
  - 5.1.1. Main ..... 58
  - 5.1.2. Advanced ..... 59
  - 5.1.3. Chipset..... 69
  - 5.1.4. Boot..... 74
  - 5.1.5. Security ..... 76
  - 5.1.6. Save & Exit ..... 77

**Appendices ..... 79**

- Appendix A: HSPA-SI1400 Hardware Installation..... 80
  - C.1. Install HSPA-SI1400..... 80
- Appendix B: WIFI-AT2350 Hardware Installation ..... 85
  - D.1. Install WIFI-AT2350..... 85
- Appendix C: GPS Module Hardware Installation..... 90

## Copyright Notice

All Rights Reserved.

The information in this document is subject to change without prior notice in order to improve the reliability, design and function. It does not represent a commitment on the part of the manufacturer.

Under no circumstances will the manufacturer be liable for any direct, indirect, special, incidental, or consequential damages arising from the use or inability to use the product or documentation, even if advised of the possibility of such damages.

This document contains proprietary information protected by copyright. All rights are reserved. No part of this document may be reproduced by any mechanical, electronic, or other means in any form without prior written permission of the manufacturer.

## Declaration of Conformity

### CE

The CE symbol on the computer indicates that it is in compliance with the directives of the Union European (EU). A Certificate of Compliance is available by contacting Technical Support.

This product has passed the CE test for environmental specifications when shielded cables are used for external wiring. We recommend the use of shielded cables. This kind of cable is available from ARBOR. Please contact your local supplier for ordering information.

### Warning

This is a class A product. In a domestic environment this product may cause radio interference in which case the user may be required to take adequate measures.

## FCC Class A

This device complies with Part 15 of the FCC Rules. Operation is subject to the following two conditions:

- (1) This device may not cause harmful interference, and
- (2) This device must accept any interference received, including interference that may cause undesired operation.

### NOTE:

This equipment has been tested and found to comply with the limits for a Class A digital device, pursuant to Part 15 of the FCC Rules. These limits are designed to provide reasonable protection against harmful interference when the equipment is operated in a commercial environment. This equipment generates, uses, and can radiate radio frequency energy and, if not installed and used in accordance with the instruction manual, may cause harmful interference to radio communications. Operation of this equipment in a residential area is likely to cause harmful interference in which case the user will be required to correct the interference at his own expense.

### RoHS

ARBOR Technology Corp. certifies that all components in its products are in compliance and conform to the European Union's Restriction of Use of Hazardous Substances in Electrical and Electronic Equipment (RoHS) Directive 2002/95/EC.

The above mentioned directive was published on 2/13/2003. The main purpose of the directive is to prohibit the use of lead, mercury, cadmium, hexavalent chromium, polybrominated biphenyls (PBB), and polybrominated diphenyl ethers (PBDE) in electrical and electronic products. Member states of the EU are to enforce by 7/1/2006.

ARBOR Technology Corp. hereby states that the listed products do not contain unintentional additions of lead, mercury, hex chrome, PBB or PBDB that exceed a maximum concentration value of 0.1% by weight or for cadmium exceed 0.01% by weight, per homogenous material. Homogenous material is defined as a substance or mixture of substances with uniform composition (such as solders, resins, plating, etc.). Lead-free solder is used for all terminations (Sn(96-96.5%), Ag(3.0-3.5%) and Cu(0.5%)).

### SVHC / REACH

To minimize the environmental impact and take more responsibility to the earth we live, Arbor hereby confirms all products comply with the restriction of SVHC (Substances of Very High Concern) in (EC) 1907/2006 (REACH --Registration, Evaluation, Authorization, and Restriction of Chemicals) regulated by the European Union.

All substances listed in SVHC < 0.1 % by weight (1000 ppm)

## Important Safety Instructions

Read these safety instructions carefully

1. Read all cautions and warnings on the equipment.
2. Place this equipment on a reliable surface when installing. Dropping it or letting it fall may cause damage
3. Make sure the correct voltage is connected to the equipment.
4. For pluggable equipment, the socket outlet should be near the equipment and should be easily accessible.
5. Keep this equipment away from humidity.
6. The openings on the enclosure are for air convection and protect the equipment from overheating. **DO NOT COVER THE OPENINGS.**
7. Position the power cord so that people cannot step on it. Do not place anything over the power cord.
8. Never pour any liquid into opening. This may cause fire or electrical shock.
9. Never open the equipment. For safety reasons, the equipment should be opened only by qualified service personnel.
10. If one of the following situations arises, get the equipment checked by service personnel:
  - a. The power cord or plug is damaged.
  - b. Liquid has penetrated into the equipment.
  - c. The equipment has been exposed to moisture.
  - d. The equipment does not work well, or you cannot get it to work according to the user's manual.
  - e. The equipment has been dropped or damaged.
  - f. The equipment has obvious signs of breakage.
11. Keep this User's Manual for later reference.

### Product Heat



The computer generates heat during operation. Contact the computer's chassis with your body could cause discomfort or even a skin burn.

### Warning

The Box PC and its components contain very delicately Integrated Circuits (IC). To protect the Box PC and its components against damage caused by static electricity, you should always follow the precautions below when handling it:

1. Disconnect your Box PC from the power source when you want to work on the inside.
2. Use a grounded wrist strap when handling computer components.
3. Place components on a grounded antistatic pad or on the bag that came with the Box PC, whenever components are separated from the system.

### **Replacing Lithium Battery**

Incorrect replacement of the lithium battery may lead to a risk of explosion.

The lithium battery must be replaced with an identical battery or a battery type recommended by the manufacturer.

Do not throw lithium batteries into the trash can. It must be disposed of in accordance with local regulations concerning special waste.

### **Technical Support**

If you have any technical difficulties, please consult the user's manual first at:  
<ftp://ftp.arbor.com.tw/pub/manual>

Please do not hesitate to call or e-mail our customer service when you still cannot find out the answer.

<http://www.arbor.com.tw>

E-mail:[info@arbor.com.tw](mailto:info@arbor.com.tw)



## **Warranty**

This product is warranted to be in good working order for a period of one year from the date of purchase. Should this product fail to be in good working order at any time during this period, we will, at our option, replace or repair it at no additional charge except as set forth in the following terms. This warranty does not apply to products damaged by misuse, modifications, accident or disaster.

Vendor assumes no liability for any damages, lost profits, lost savings or any other incidental or consequential damage resulting from the use, misuse of, or inability to use this product. Vendor will not be liable for any claim made by any other related party.

Vendors disclaim all other warranties, either expressed or implied, including but not limited to implied warranties of merchantability and fitness for a particular purpose, with respect to the hardware, the accompanying product's manual(s) and written materials, and any accompanying hardware. This limited warranty gives you specific legal rights.

Return authorization must be obtained from the vendor before returned merchandise will be accepted. Authorization can be obtained by calling or faxing the vendor and requesting a Return Merchandise Authorization (RMA) number. Returned goods should always be accompanied by a clear problem description.

---

This page is intentionally left blank.

---

# Chapter 1

## Introduction

### 1.1. Product Highlights

- **Fanless and rugged design**
- Build-in Intel® Core™ i7-3517UE 1.7G Hz Processor
- Wide Range DC Power Input (9~36V)
- Support Smart Ignition for vehicle
- Power on/off delay and low voltage protection
- 4-channel POE
- Mini PCIe expansion slots with 2\*SIM holders for LTE and HSUPA
- Two Removable 2.5" SSD trays
- 12VDC output



### 1.2. About this Manual

This manual is meant for the experienced users and integrators with hardware knowledge of personal computers. If you are not sure about the description herein, consult your vendor before further handling.

We recommend that you keep one copy of this manual for the quick reference for any necessary maintenance in the future. Thank you for choosing ARBOR products.

### 1.3. Specifications

<b>System</b>	
CPU	Soldered onboard Intel® Core™ i7-3517UE 1.7GHz
BIOS	AMI BIOS
Chipset	Intel® QM77
Graphic	Integrated Intel® HD Graphics 4000
Memory	1 x 204-pin SO-DIMM sockets, supporting DDR3 1333/1600 MHz, up to 8GB SDRAM
Storage	<ul style="list-style-type: none"> <li>• One internal mSATA.</li> <li>• Two external SATA SSD.</li> </ul>
Ethernet	<ul style="list-style-type: none"> <li>• One Intel® 82579LM GbE controller</li> <li>• Five Intel® i210IT Gigabit Ethernet controller</li> </ul>
Watchdog Timer	1 ~ 255 levels reset
<b>I/O Ports</b>	
Serial Port	<ul style="list-style-type: none"> <li>• 1 x RS-232 and 1 x RS-232/422/485 with DB-9 male connector, isolation protection</li> </ul>
USB Port	<ul style="list-style-type: none"> <li>• 4 x USB 3.0 ports with type A connector (2 ports: front, 2 ports: rear)</li> </ul>
LAN Port	<ul style="list-style-type: none"> <li>• 2 x RJ-45 ports for Gigabit Ethernet, front side</li> <li>• 4 x RJ-45 ports for Gigabyte Ethernet and support IEEE802.3af PoE (Max. 60W), rear side</li> </ul>
Video Port	1 x DB-15 female connector for Analog RGB 1 x DVI-D female connector for Digital Video output
Audio	Mic-in/ Line-out
Expansion Bus	<ul style="list-style-type: none"> <li>• 1 x Mini-PCIe slot for optional Wi-Fi/Bluetooth module</li> <li>• 1 x Mini-PCIe slot interconnected with SIM card socket for optional LTE module</li> <li>• 1 x Mini-PCIe slot interconnected with SIM card socket for optional HSUPA module</li> <li>• 2 x SIM sockets (outside accessible)</li> </ul>
<b>Storage</b>	
Type	<ul style="list-style-type: none"> <li>• Two 2.5" drive bays for SATA SSD</li> <li>• One mSATA socket for mSATA Disk.</li> </ul>

<b>Qualification</b>	
Certification	CE, FCC Class A, E13 Mark
<b>Environment</b>	
Operating Temp.	-20~55°C (-4~131°F), ambient w/ air flow
Storage Temp.	-40~80°C (-40 ~ 185°F)
Relative Humidity	5 ~ 95% @ 55°C (non-condensing)
Vibration	3Grms/5~500Hz/random operation, with SSD
Shock	Operating 40G (11ms), Non-operating 60G with SSD
<b>Mechanical</b>	
Construction	Aluminum alloy
Mounting	Support wall-mount
Weight	4.65 Kg (10.25 lb)
Dimensions (W x D x H)	260 x 180 x 80 mm (10.6" x 7.08 x 3.14")
<b>Power Requirement</b>	
Power Input	DC 9~36V input, w/ 3-pin terminal block
Power Consumption	Max. 90W

## 1.4. Inside the Package

Upon opening the package, carefully inspect the contents. If any of the items is missing or appears damaged, contact your local dealer or distributor. The package should contain the following items:



Fanless In-Vehicle Surveillance PC

ARTS-4770



One Driver CD  
One User's Manual

## 1.5. Ordering Information

<b>ARTS-4770</b>	Vehicle Barebone System w/ Intel® Core™ i7-3517UE, w/o memory and storage
<b>ARTS-4700-16S4G</b>	Vehicle BOX System w/ Intel® Core™ i7-3517UE, w/ 16GB mSATA and 4GB memory

### 1.5.1. Optional Accessories

The following items are normally optional, but some vendors may include them as a standard package, or some vendors may not carry all the items.

**PAC-B120W-FSP**      19V/6.32A 120W AC/DC adapter kit



### 1.5.2. Configure-to-Order Service

Make the computer more tailored to your needs by selecting one or more components from the list below to be fabricated to the computer.

**SSD-25032**      Memoright 2.5" 32GB SATAII SSD kit



**SSD-25016**      Memoright 2.5" 16GB SATAII SSD kit

**GPS-UART Kit**      U-BLOX GPS Kit



**WIFI-AT2350**      Atheros AR9462 WiFi module w/ 20cm & 30cm internal wiring



**ANT-D11**      1 x WiFi Dual-band 2.4G/5G antenna



**HSPA-SI1400**      HSUPA 3.75G module kit & internal wiring



**MM-3I-4G**      Industrial-grade DDR3-1333 4GB SDRAM

**MK-3I-8G**      Industrial-grade DDR3-1600 8GB SDRAM



---

This page is intentionally left blank.



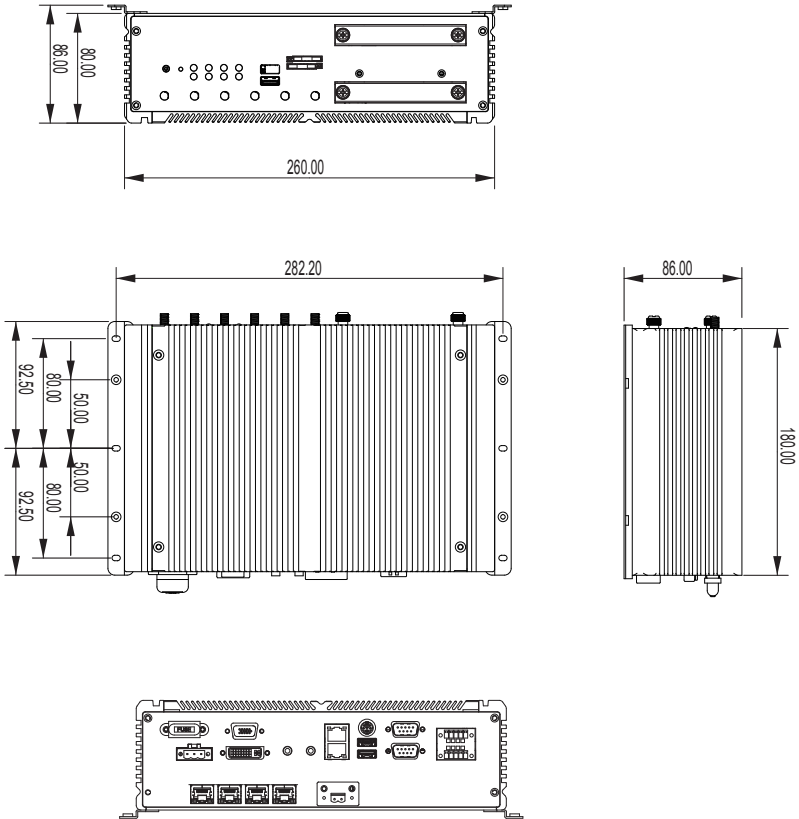
---

# Chapter 2

## Getting Started

## 2.1. Dimensions

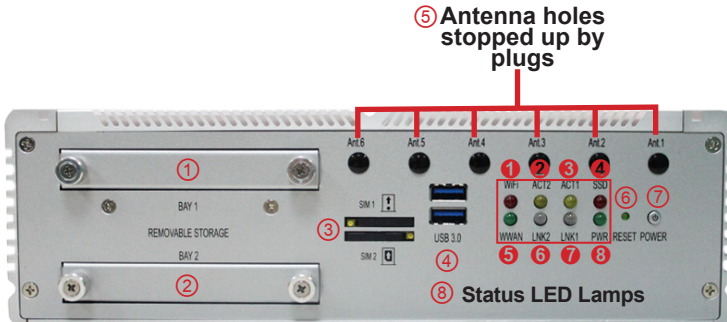
The following illustration shows the dimensions of the computer, with the measurements in width, depth, and height called out.



## 2.2. Take A Tour

The computer has some I/O ports, status LED light and controls on the front and rear panel. The following illustrations show all the components called out .

### Front View



- I/O

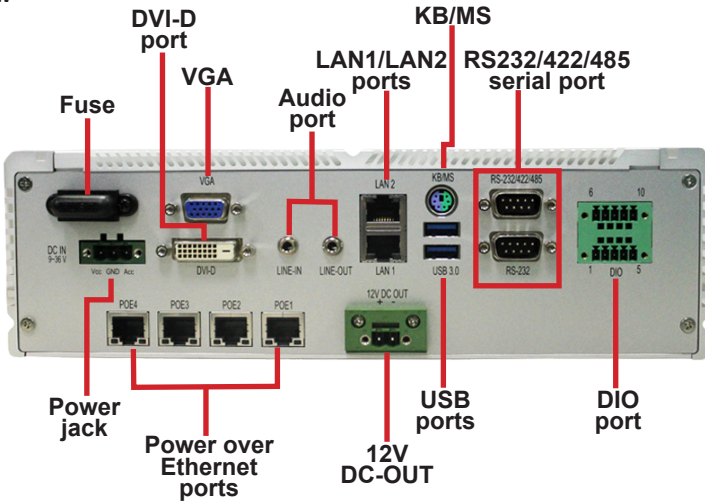
No.	Description	No.	Description
①	SSD tray 1	⑤	Antenna holes stopped up by plugs
②	SSD tray 2	⑥	Reset button (accessible with a pin)
③	SIM1/2 card slots	⑦	Power button
④	USB 3.0 port	⑧	LED Indicator

- Status LED Lamps:

No.	LED Color	Description
①	Red	This LED lights red when WiFi is on.
②	Yellow	This LED lights yellow when LAN2 port is streaming data.
③	Yellow	This LED lights yellow when LAN1 port is streaming data.
④	Red	This LED lights red when SSD is being accessed.

5	Green	This LED lights green when 3G is on.
6	Green	This LED lights green when LAN2 port is connected to 100M bit/s network equipment.
	Orange	This LED lights orange when LAN2 port is connected to 1000M bit/s network equipment.
7	Green	This LED lights green when LAN1 port is connected to 100M bit/s network equipment.
	Orange	This LED lights orange when LAN1 port is connected to 1000M bit/s network equipment.
8	Green	This LED lights when power is on.

Rear View



## 2.3. Driver Installation Notes

The computer supports the operating systems of Windows 7. Find the necessary device drivers on the CD that comes with your purchase. DO follow the sequence below to install the drivers to prevent errors:

**Chipset→VGA→Audio→Ethernet→ME**

Paths to find device drivers on CD:

Windows 7	
Device	Driver Path
Chipset	\Chipset\ (infinst_autol_V9.4.0.1026.exe)
VGA	32Bit : \VGA\32Bit\ (Win32_15338.exe)
	64Bit: \VGA\64Bit\ (Win64_15338.exe)
Audio	32Bit : \Audio\Win7_8_Vista\ (32bit_Win7_Win8_Win81_R273.exe)
	64Bit: \Audio\Win7_8_Vista\ (64bit_Win7_Win8_Win81_R273.exe)
Ethernet	32Bit : \ Ethernet\Win7\ (PROWin32.exe)
	64Bit: \ Ethernet\Win7\ (PROWinx64.exe)
Intel® Management Engine	\ME (Setup.exe)
USB3.0	\USB3.0\ (Setup.exe)

Windows 8.1	
Device	Driver Path
Chipset	\Chipset\ (infinst_autol_V9.4.0.1026.exe)
VGA	32Bit : \VGA\32Bit\ (Win32_15338.exe)
	64Bit: \VGA\64Bit\ (Win64_15338.exe)
Audio	32Bit : \Audio\Win7_8_Vista\ (32bit_Win7_Win8_Win81_R273.exe)
	64Bit: \Audio\Win7_8_Vista\ (64bit_Win7_Win8_Win81_R273.exe)
Ethernet	32Bit : \ Ethernet\Win8\ (PROWin32.exe)
	64Bit: \ Ethernet\Win8\ (PROWinx64.exe)
Intel® Management Engine	\ME (Setup.exe)
USB3.0	\USB3.0\ (Setup.exe)

---

This page is intentionally left blank.

---

# Chapter 3

## System Configuration

### 3.1. Board Layout

The engine of the computer is constructed by a CPU board and a carrier board. Following in this section you will be guided through the CPU boards and carrier board of the computers.

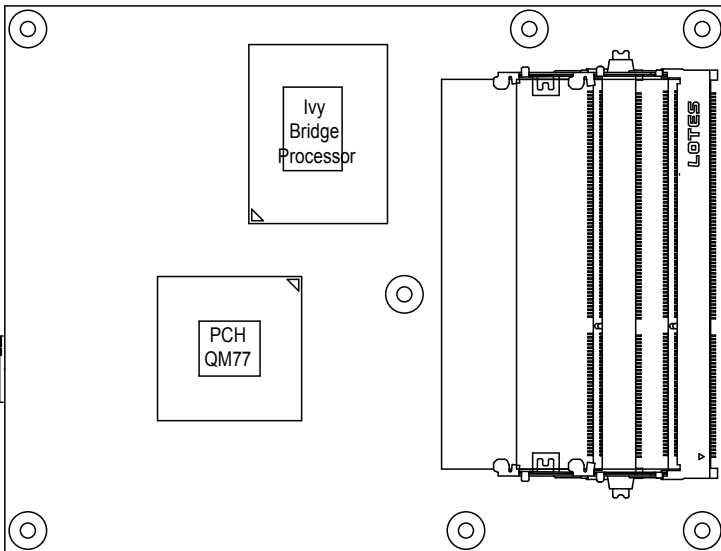
#### 3.1.1. CPU Boards

The CPU board for ARTS-4770 is EmETXe-i77M2-3517UE.

##### 3.1.1.1. ARTS-4770 - EmETXe-i77M2-3517UE

The CPU board for ARTS-4770 is EmETXe-i77M2-3517UE, with Intel® Core™ i7-3517UE.

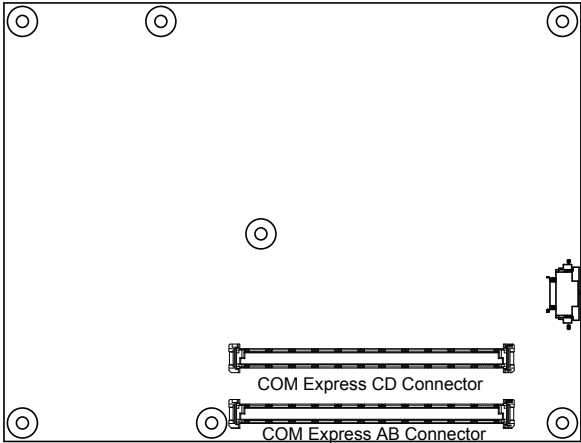
#### Top View





**Bottom View**

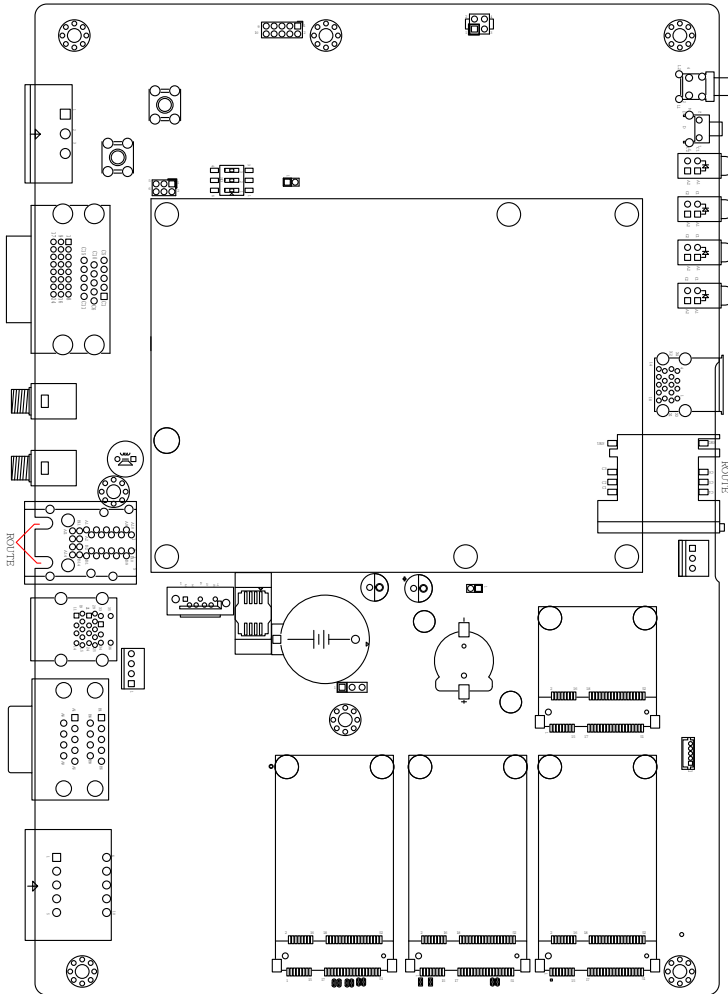
COM Express® AB Connector  
COM Express® CD Connector



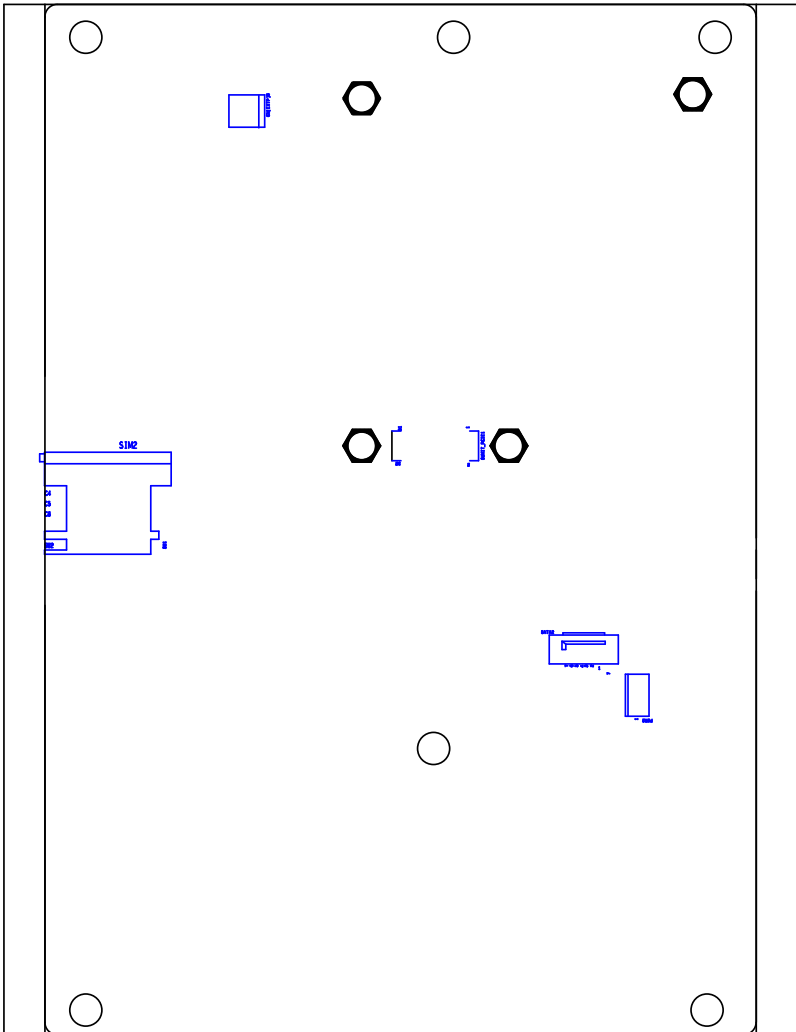
### 3.1.2. Carrier Board

PBC-1916 is the carrier board.

#### PBC-1916: Board Top



PBC-1916: Board Bottom



### 3.2. Jumpers and Connectors

The carrier board PBC-1916 comes with some connectors to join devices and some jumpers to alter the computer's hardware configuration. The following in this chapter will explicate each of these components.

#### 3.2.1. Jumpers

##### JBAT1

**Function:** CMOS Setting

**Jumper Type:** Onboard 2.54mm-pitch 1x3-pin header



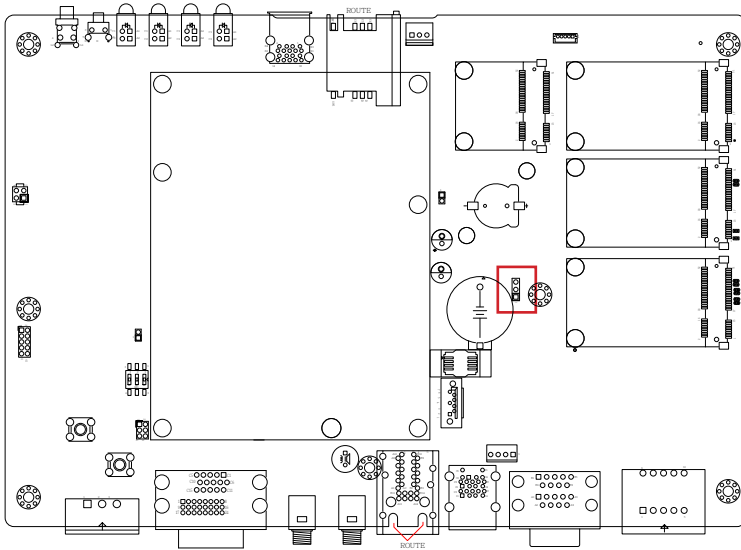
**Setting:** Short pin 1 and pin 2 to keep CMOS.  
(The default setting.)



Short pin 2 and pin 3 to clear CMOS.



##### Board Top



## JACON1

**Function:** Vehicle Acc mode selection

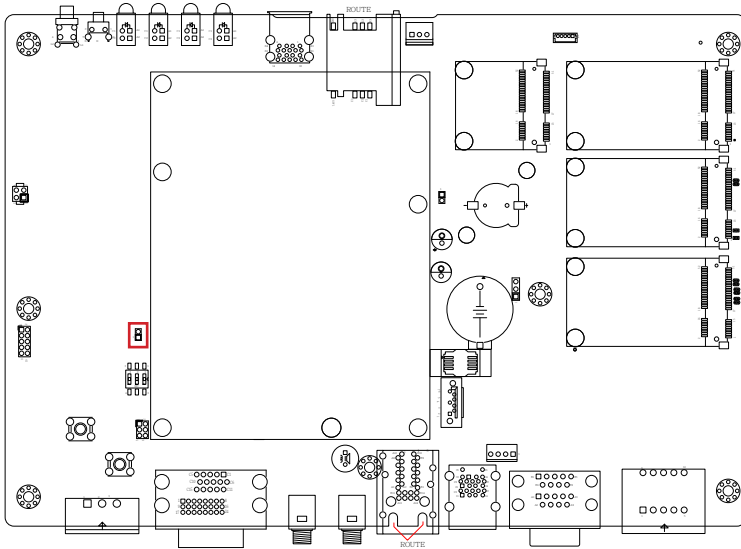


**Jumper Type:** Onboard 2.00mm-pitch 2-pin header

**Setting:** Open: for Vehicle (default), without jumper

Close: for Automation, with jumper

## Board Top

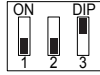


## SW1

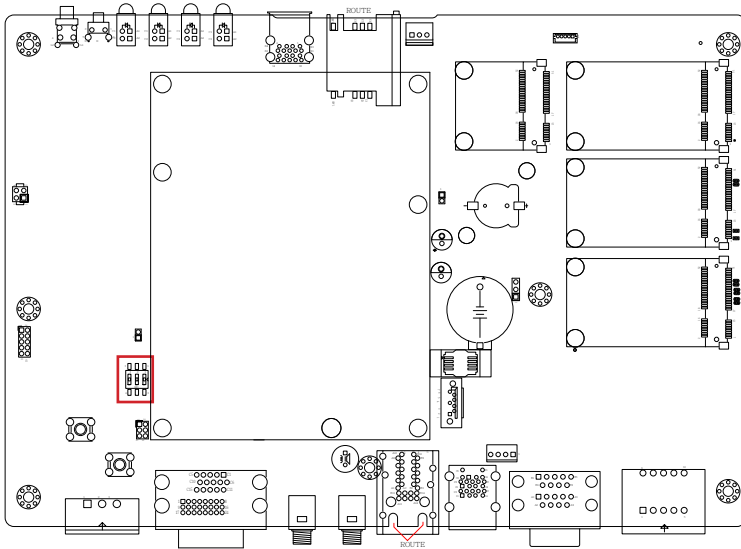
**Function:** Battery Type Selection

**Switch Type:**

- Setting:** (1-6) ON 24V  
(2-5) ON 12V  
(3-4) ON 9~36V (default)



## Board Top



### 3.2.2. Connectors

#### CN5(RSTB)1

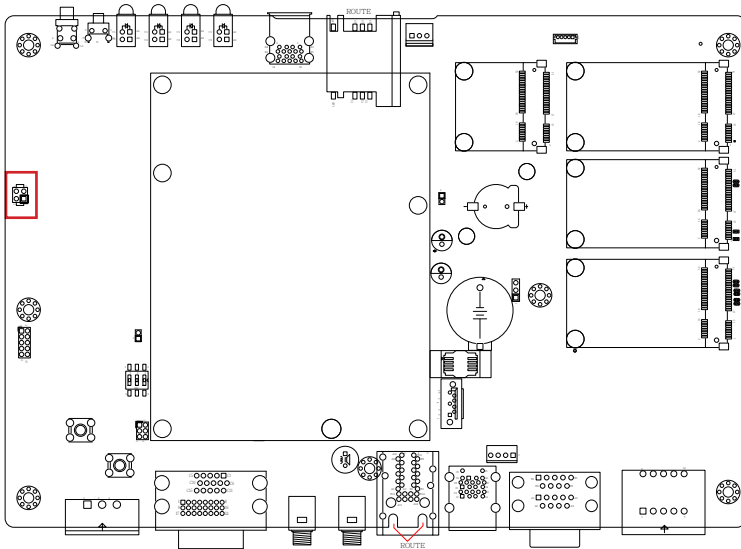
**Function:** Power And Reset Button

**Connector Type:** Onboard 2.54 mm-pitch 2x2-pin header



- Setting:**
1. Reset Button
  2. GND
  3. Power Button
  4. GND

#### Board Top



# System Configuration

## JPIC1

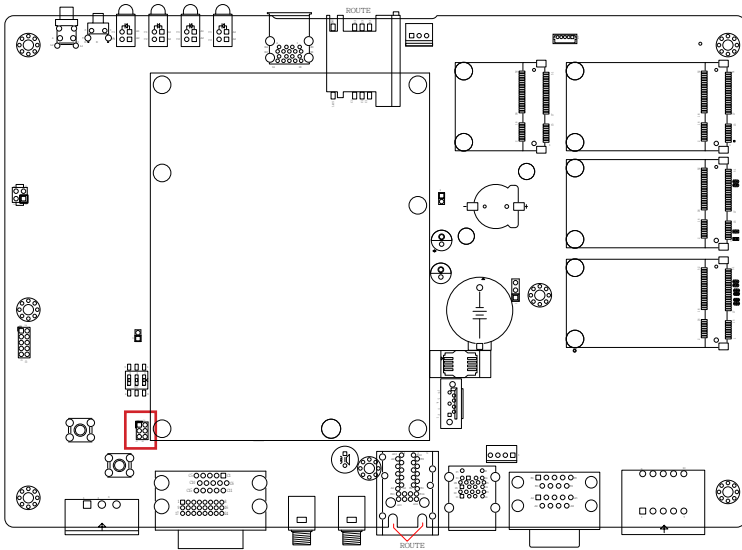
**Function:** PIC MCU Update Port

**Connector Type:** Onboard 2.00mm-pitch 2x3-pin header



- Setting:**
1. PIC\_TX
  2. Clock
  3. Data
  4. GND
  5. 5V
  6. Reset

## Board Top

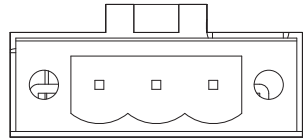




**PWRIN1**

**Function:** Power Input Connector

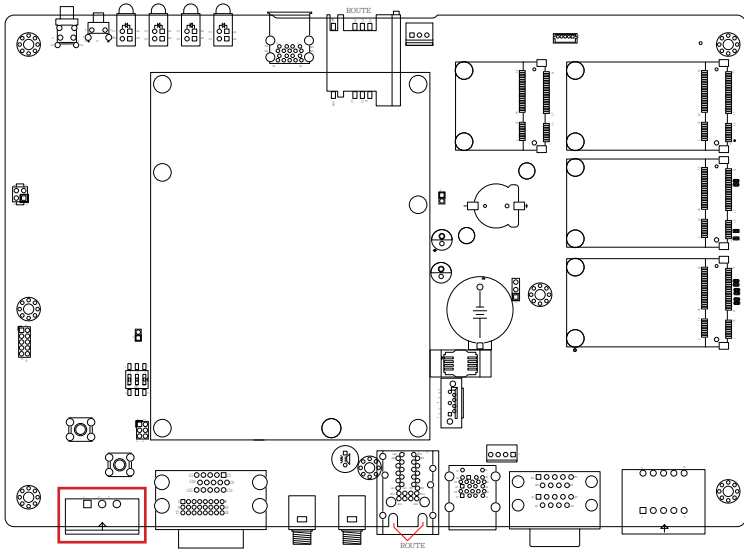
**Connector Type:** Onboard 2.54mm-pitch 1x3-pin header



1 2 3

Pin	Description
1	VCC_IN 9~36V
2	GND
3	ACC

**Board Top**



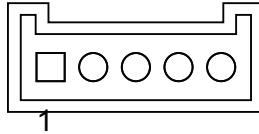
# System Configuration

## JGPS1

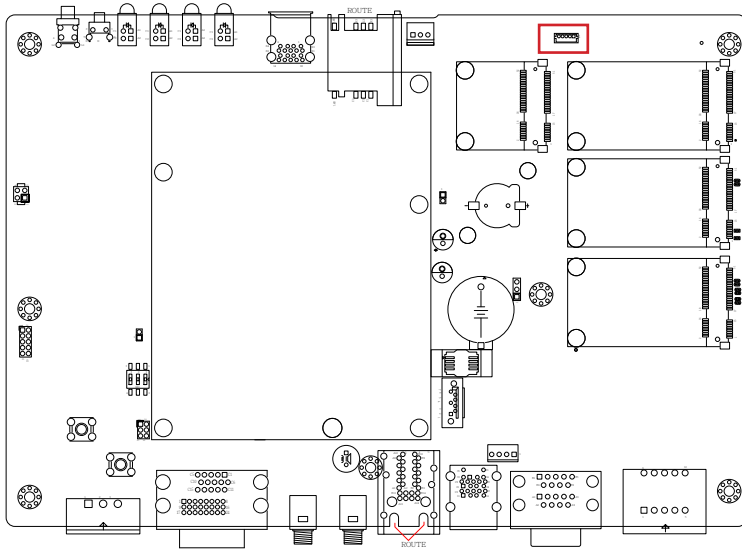
**Description:** GPS Port Connector(USB interface)

**Connector Type:** Onboard 2.00mm pitch 5-pin wafer connector

Pin	Description
1	5VCC
2	Data-
3	Data+
4	3.3V GPS VBackup
5	GND



### Board Top

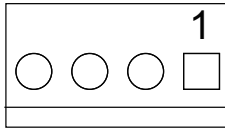


## PWR1 & PWR2

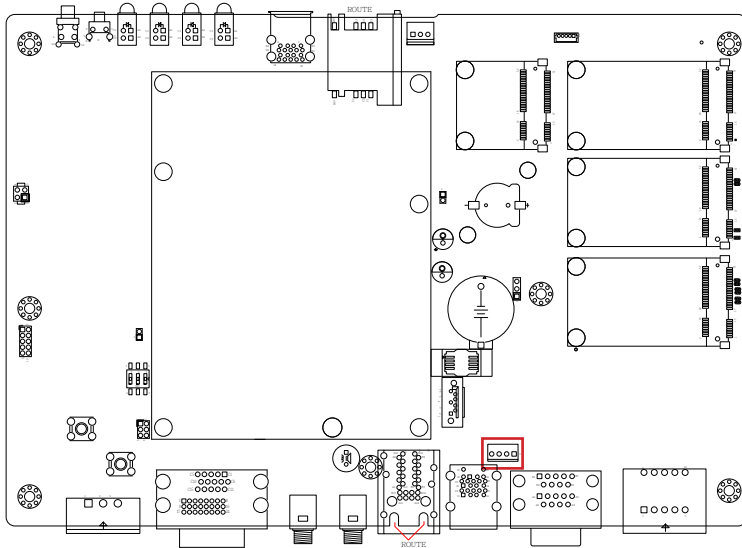
**Description:** SATA1 And SATA2 Power connector

**Connector Type:** Onboard 3.96mm-pitch 4-pin wafer connector

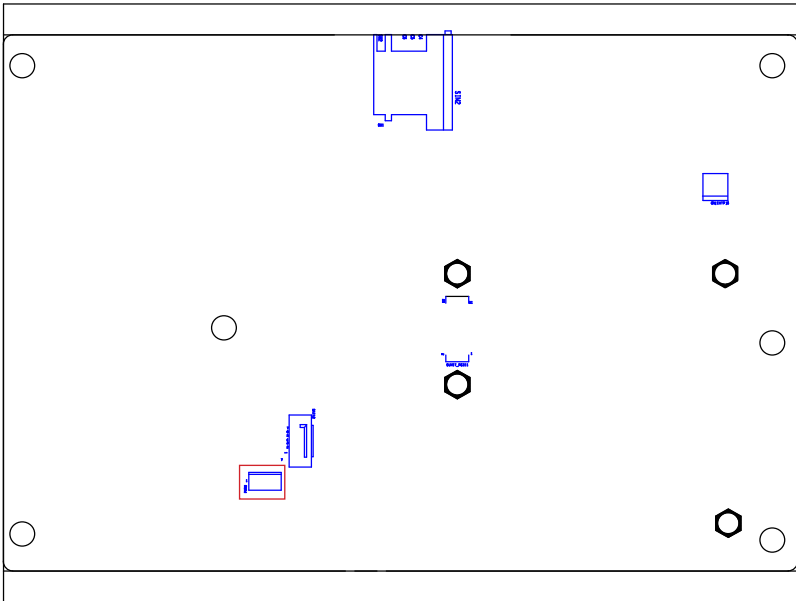
Pin	Description
1	VCC5
2	GND
3	GND
4	VCC12



### Board Top



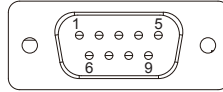
**Board Bottom**



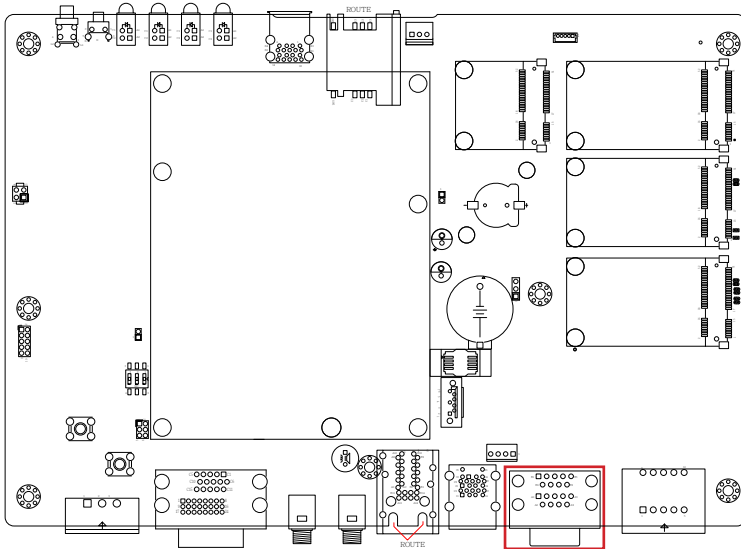
## COM1& COM2

**Function:** RS-232 Port (COM1), RS-232/422/485 (COM2)

**Connector Type:** External 9-pin D-sub male connector



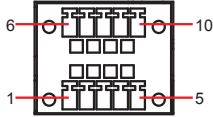
## Board Top



## CN10

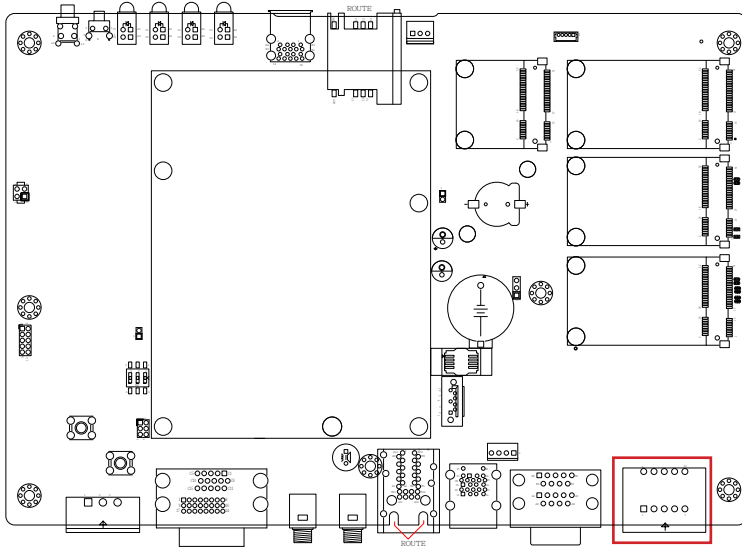
**Description:** DIGITAL SINGAL INPUT AND OUTPUT

**Connector Type:**



Pin	Description	Pin	Description
1	Digital Input 1	6	Digital Output 1
2	Digital Input 2	7	Digital Output 2
3	Digital Input 3	8	Digital Output 3
4	Digital Input 4	9	Digital Output 4
5	Ground		

## Board Top

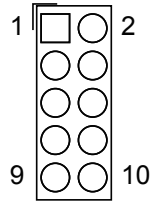


### CN3(P80)1

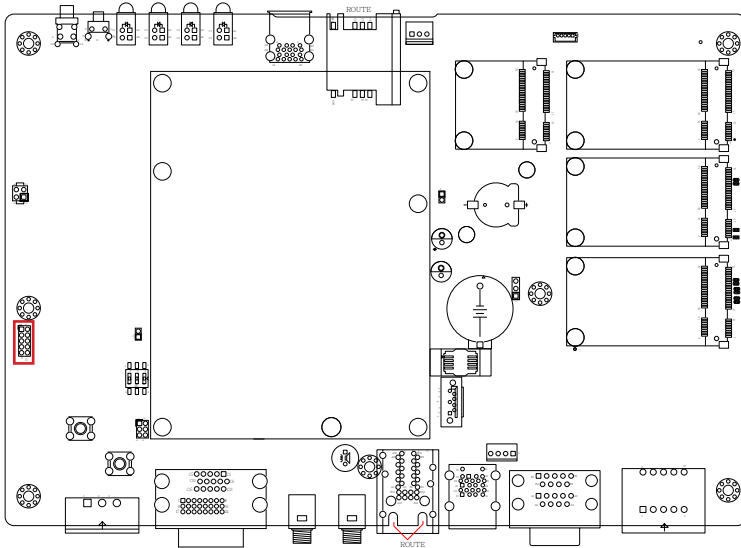
**Description:** Port 80 Output

**Connector Type:**

Pin	Description	Pin	Description
1	PCI_CLK	2	GND
3	LPC_FRAME#	4	LPC_LAD0
5	PLTRST	6	PLTRST
7	PLC_LAD3	8	PLC_LAD2
9	VCC3	10	PLC_LAD1



### Board Top

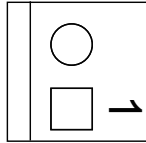


## CN(EXTP)6

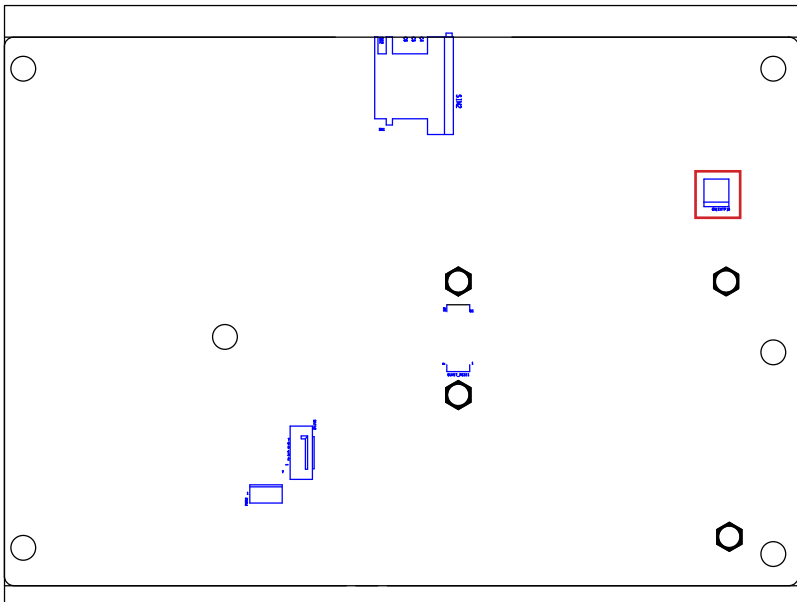
**Description:** External Power Connector

**Connector Type:** Onboard 3.96mm-pitch 2-pin wafer connector

Pin	Description
2	GND
1	DCIN_VCC



### Board bottom



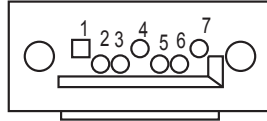


## SATA1

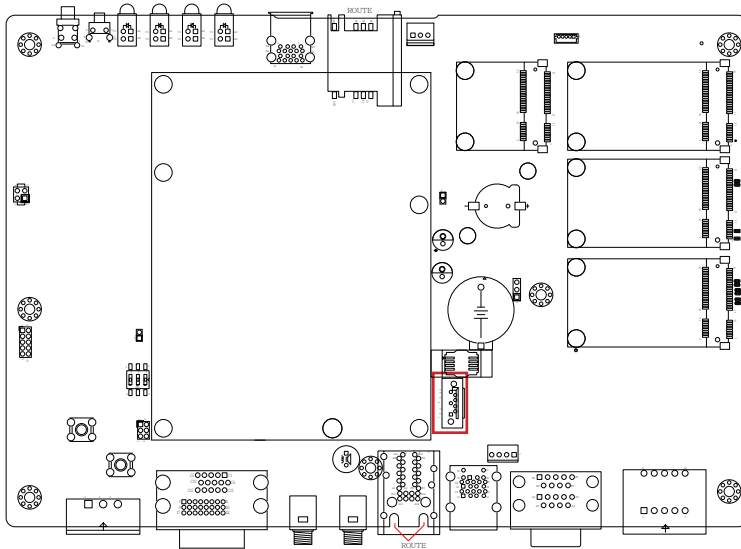
**Description:** Serial ATA connectors for storage devices

**Connector Type:** 7-pin serial ATA connector

Pin	Description
1	GND
2	TX+
3	TX-
4	GND
5	RX-
6	RX+
7	GND



### Board Top

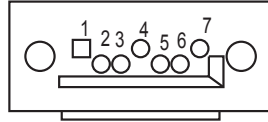


## SATA2

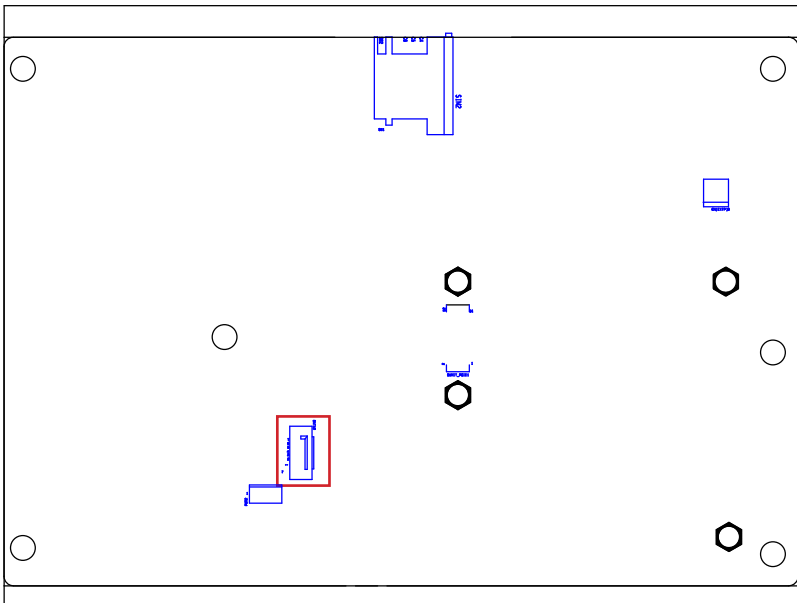
**Description:** Serial ATA connectors for storage devices

**Connector Type:** 7-pin serial ATA connector

Pin	Description
1	GND
2	TX+
3	TX-
4	GND
5	RX-
6	RX+
7	GND



## Board Top

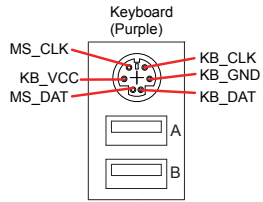


## KBUSB1

**Function:** Keyboard/mouse PS/2 and USB 3.0 stacked port

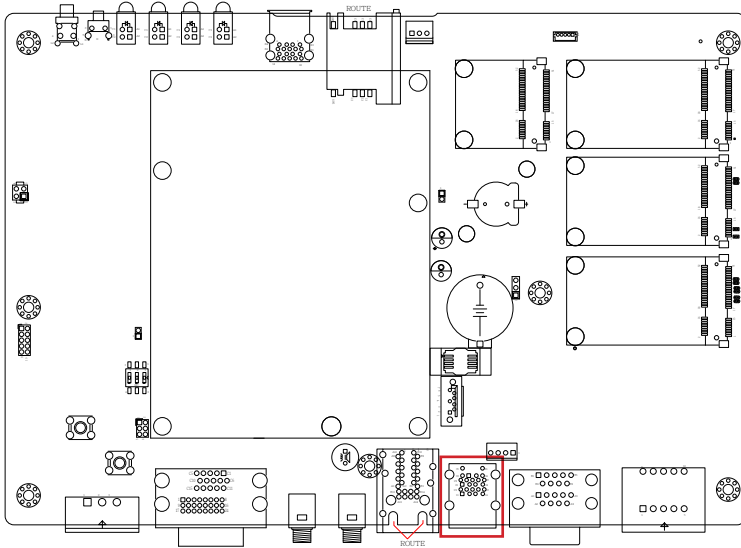
**Connector Type:** 6-pin Mini-DIN and Type A USB 3.0 stacked connectors

### Pin Assignment:



The pin assignments conform to the industry standard.

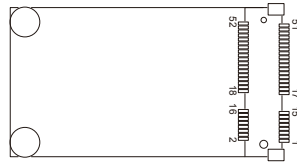
## Board Top



# System Configuration

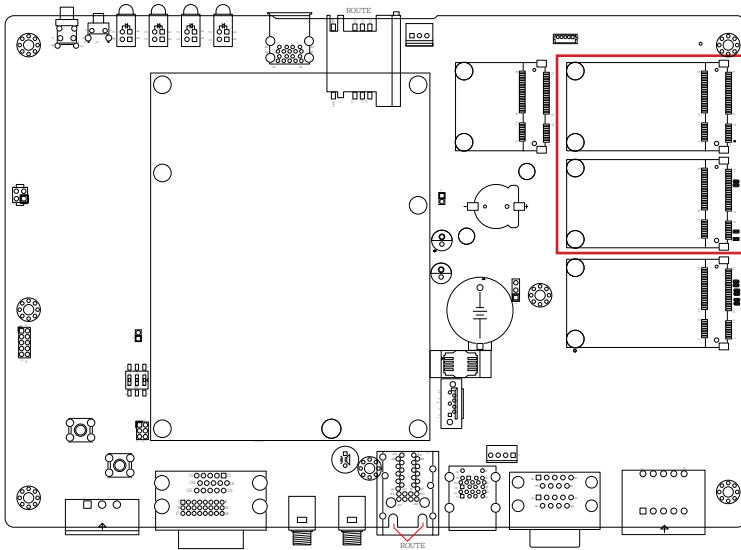
## MC1 & MC2

**Description:** PCI Express Mini-card sockets  
**Connector Type:** Onboard 0.8mm-pitch 52-pin edge card connector



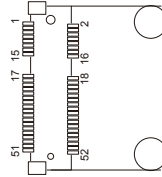
Pin	Desc.	Pin	Desc.	Pin	Desc.	Pin	Desc.
1	Wake	16	UIM_VPP	31	PETn0	43	GND
2	+3.3V	17	UIM_C8/Reserved	32	SMB_DATA	44	LED_WLAN#
3	COEX1	18	GND	34	GND	45	Reserved
4	GND	19	UIM_C4/Reserved	35	GND	46	LED_WPAN#
5	COEX2	20	W_Disable#	36	USB_D-	47	Reserved
6	+1.5V	21	GND	37	GND	48	+1.5V
7	CLKREQ#	22	PERST#	38	USB_D+	49	Reserved
8	UIM_PWR	23	PERn0	39	+3.3V	50	GND
9	GND	24	+3.3V	40	GND	51	Reserved
10	UIM_DATA	25	PERp0	41	+3.3V	52	+3.3V
11	REFCLK-	26	GND	42	LED_WWAN#		
12	UIM_CLK	27	GND				
13	REFCLK+	28	+1.5V				
14	UIM_RESET	29	GND				
15	GND	30	SMB_CLK				

## Board Top



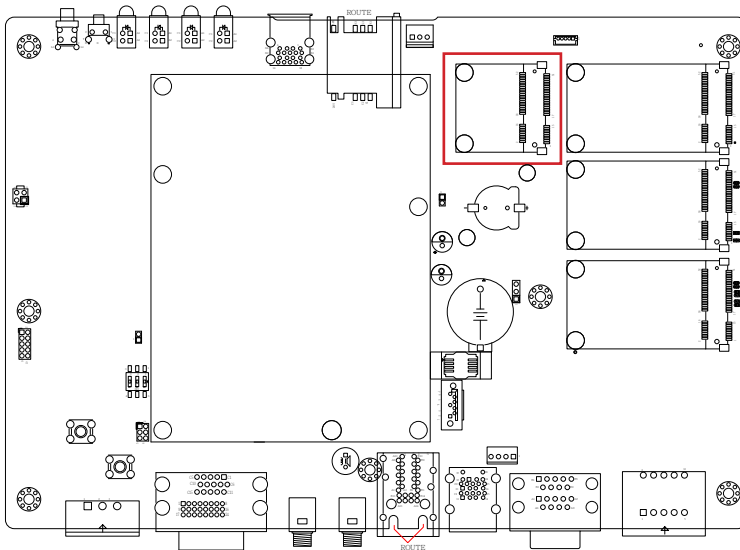
MC3

**Description:** PCI Express Mini-card socket  
**Connector Type:** Onboard 0.8mm-pitch 52-pin edge card connector



Pin Desc.	Pin Desc.	Pin Desc.	Pin Desc.
1 WAKE#	16 N/C	31 PE CAD3 TX-	42 3G LED A
2 +3.3V	17 N/C	32 SMB DATA	43 GND
3 N/C	18 GND	33 PE_CAD3_TX+	44 N/C
4 GND	19 N/C	34 GND	45 N/C
5 N/C	20 W_DISABLE#	35 GND	46 N/C
6 +1.5V	21 GND	36 USB D-	47 N/C
7 CLKREQ#	22 PCIE_ARST#	37 GND	48 +1.5V
8 UIM_PWR_A	23 PE_CAD3_RX-	38 USB D+	49 N/C
9 GND	24 +3.3V	39 +3.3V	50 N/C
10 UIM_DATA_A	25 PE_CAD3_RX+	40 GND	51 N/C
11 REFCLK-	26 GND	41 +3.3V	52 +3.3V
12 SIM_CLK_A	27 GND		
13 REFCLK+	28 +1.5V		
14 UIM_RST_A	29 GND		
15 GND	30 SMB_CLK		

Board Top

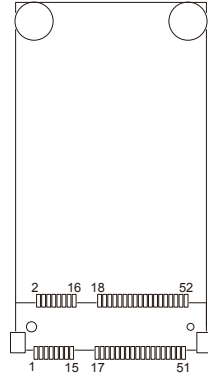


# System Configuration

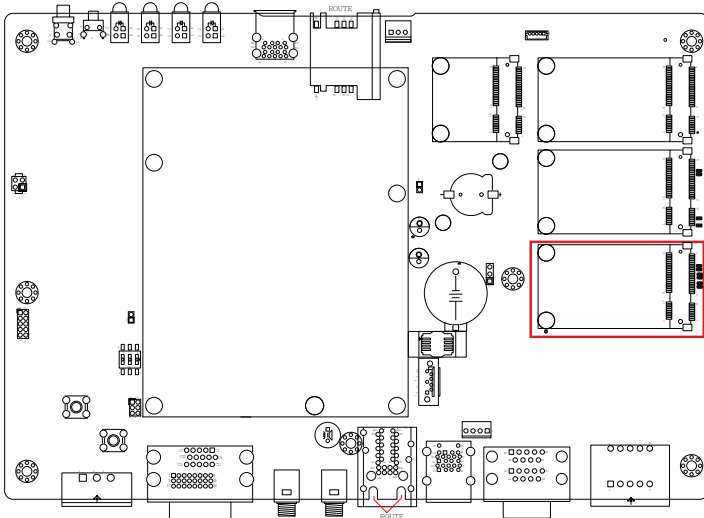
## MSATA1

**Description:** mSATA socket  
**Connector Type:** Onboard 0.8mm pitch 52-pin edge card connector

Pin	Desc.	Pin	Desc.	Pin	Desc.
1	NC	20	NC	36	NC
2	+3.3V	21	GND	37	GND
3	NC	22	NC	38	NC
4	GND	23	TX+	39	+3.3V
5	NC	24	+3.3V	40	GND
6	NC	25	TX-	41	+3.3V
7	NC	26	GND	42	NC
8	NC	27	GND	43	GND
9	GND	28	NC	44	NC
10	NC	29	GND	45	NC
11	NC	30	NC	46	NC
12	NC	31	RX-	47	NC
13	NC	32	NC	48	NC
14	NC	33	RX+	49	NC
15	GND	34	GND	50	GND
16	NC	35	GND	51	NC
17	NC			52	+3.3V
18	GND				
19	NC				



## Board Top

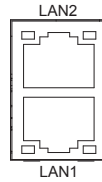


**LAN1 & 2**

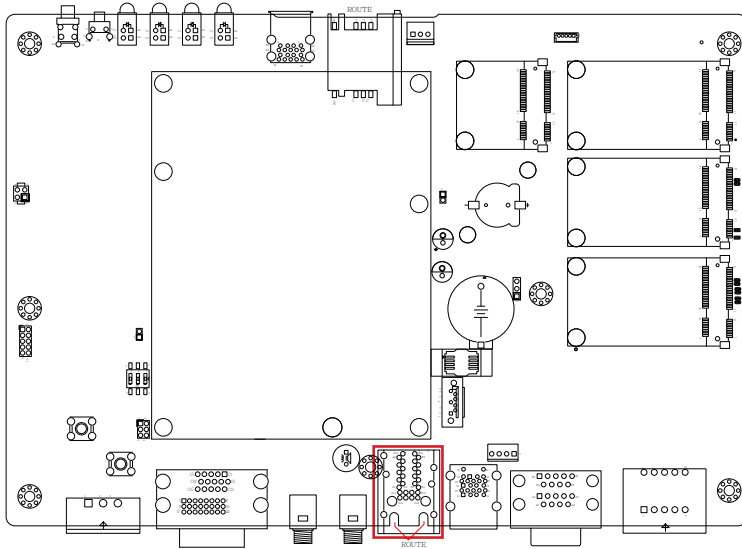
**Function:** 2 x Ethernet 10/100/1000 Mbps Connectors

**Connector type:** RJ-45 stacked connector with LED

Pin	Description	Pin	Description
1	MDI0+	5	MDI2+
2	MDI0-	6	MDI2-
3	MDI1+	7	MDI3+
4	MDI10-	8	MDI3-



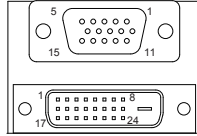
**Board Top**



**VGA1**

**Function:** Analog RGB & DVI-D Connector

**Connector type:** Analog RGB (D-Sub 15-pin female type) + DVI-D (DVI-D female connector)



Analog RGB

DVI-D

**Analog RGB Connector**

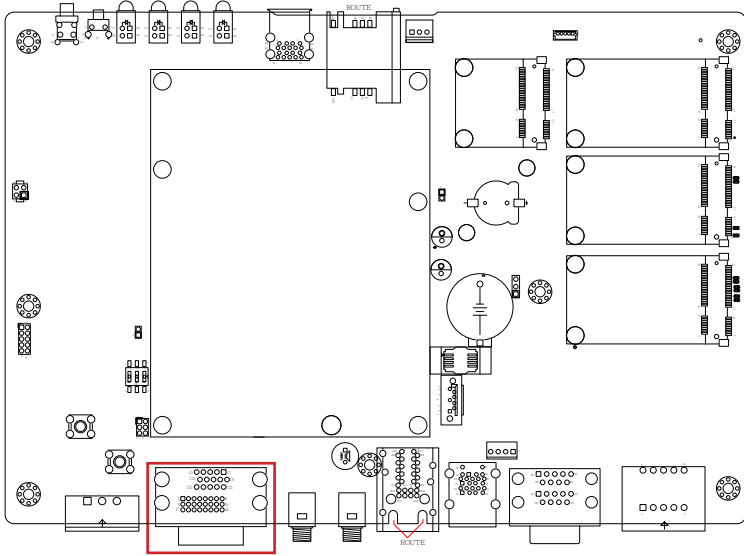
Pin	Description	Pin	Description	Pin	Description
1	RED	6	GND	11	N/C
2	GREEN	7	GND	12	VDDAT
3	BLUE	8	GND	13	HSYNC
4	N/C	9	+5V	14	VSYNC
5	GND	10	GND	15	VDCLK

**DVI-D Connector**

Pin	Description	Pin	Description	Pin	Description
1	TMDS Data 2-	9	TMDS Data 1-	17	TMDS Data 0-
2	TMDS Data 2+	10	TMDS Data 1+	18	TMDS Data 0+
3	GND	11	GND	19	GND
4	NC	12	NC	20	NC
5	NC	13	NC	21	NC
6	DDC clock	14	+5V	22	GND
7	DDC data	15	GND	23	TMDS clock+
8	NC	16	Hot plug detect	24	TMDS clock-



Board Top



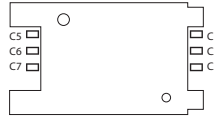
# System Configuration

## SIM1&2

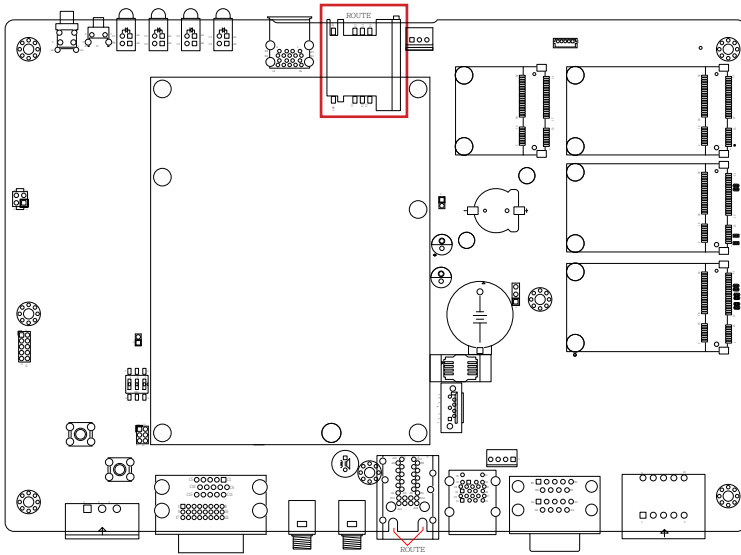
**Description:** SIM card socket

**Connector Type:** 6-pin SIM card socket

Pin	Description	Pin	Description
C5	GND	C1	POWER VOLTAGE
C6	NC	C2	RESET SIGNAL
C7	I/O	C3	CLOCK SIGNAL



## Board Top

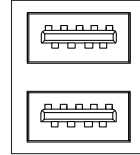


## USB1

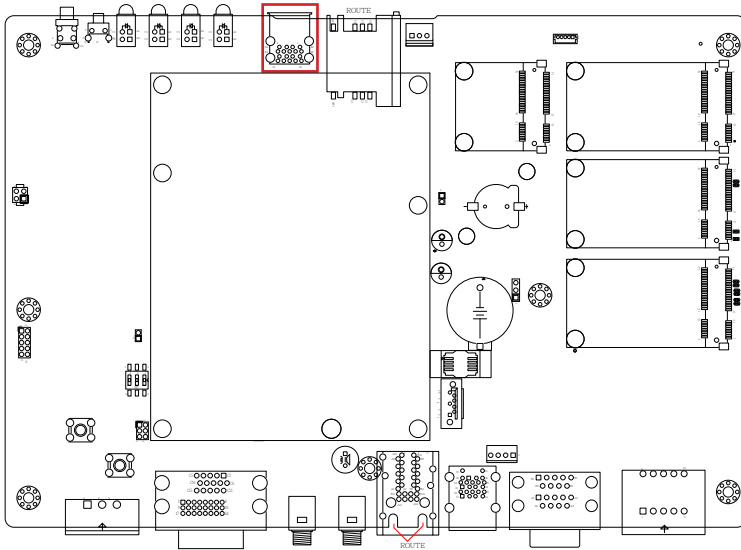
**Function:** Double-stacked USB ports  
**Connector Type:** Two SuperSpeed type-A USB 3.0 connectors

**Pin Assignment:**

Pin	Description	Pin	Description
1	VBUS	2	D-
3	D+	4	GND
5	StdA_SSRX-	6	StdA_SSRX+
7	GND	8	StdA_SSTX-
9	StdA_SSTX+		



## Board Top



---

This page is intentionally left blank.

---

# Chapter 4

## Installation and Maintenance

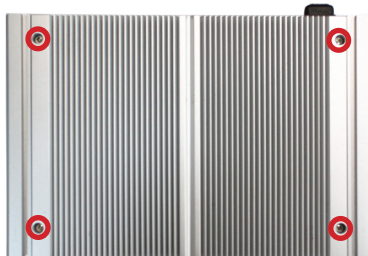
### 4.1. Install Hardware

The computer is constructed based on modular design to make it easy for users to add hardware or to maintain the computer. The following sections will guide you to the simple hardware installations for the computer.

#### 4.1.1. Open the Computer

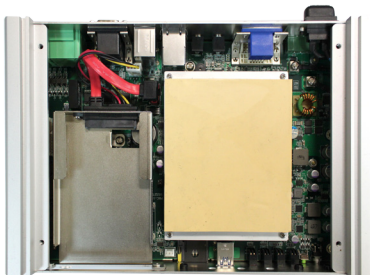
All jumpers, connectors, and PCI Express Mini-card sockets are built on the carrier board. To access these components, the computer's top cover has to go. Follow through the steps below to remove the top cover from the computer.

1. Place the computer on a flat surface. Loosen and remove the 4 screws from the top cover as marked in the illustration below.



2. Dismount the top cover.

The inside of the computer comes to view.



- ▶ To adjust jumpers or connect/disconnect devices to/from the carrier board, see [3.2.1. Jumpers](#) on page [18](#) and [3.2.2. Connectors](#) on page [21](#).

### 4.1.2. Install/uninstall SIM Card

The computer supports 2 SIM cards for mobile networking and comes with an outside-accessible SIM card slot. Follow through the guide below to install a SIM card to the computer.

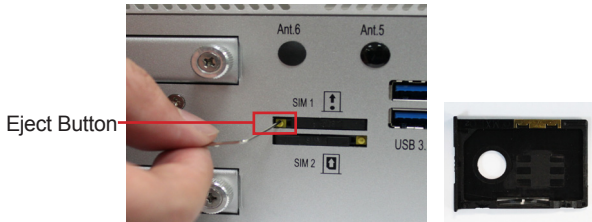
#### To install a SIM card:

1. On the front panel of the computer, find the SIM card slot.

ARTS-4770 Front



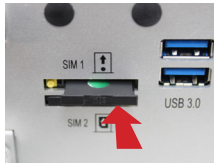
2. Use a clipper to press the eject button in the SIM card slot, and the SIM card jacket will be ejected. Pull the jacket out of the slot.



## Installation & Maintenance

---

- Put the SIM card into the slot jacket as directed in the illustration below. Push-insert the SIM card into the slot.



Push-insert the SIM card.

### To uninstall the SIM card:

- Use a clipper to press the eject button to eject the SIM card.
- Pull out the SIM card.
- Remove the SIM card jacket.
- Insert the card jacket into the slot.



### 4.1.3. Install SATA HDD/SSD

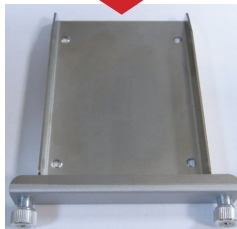
The ARTS-4770 supports two 2.5-inch SSD storage devices. To install a 2.5" SSD to the computer, follow through the guide below:

1. On the front panel of the computer, find the two drawer-like brackets, each has two screws to fix it.

**ARTS-4770 Front**



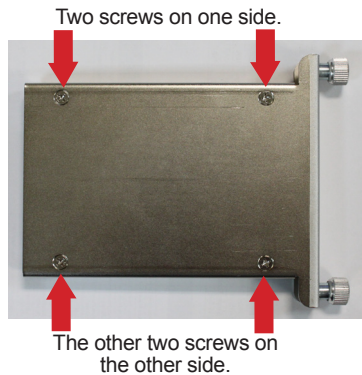
2. Loosen the screws and pull out the bracket.



- Slide a 2.5-inch SSD into the bracket.



- Fix the assemblage with four screws.



- Plug the bracket (with the SSD) back to the computer, and fasten screws.\



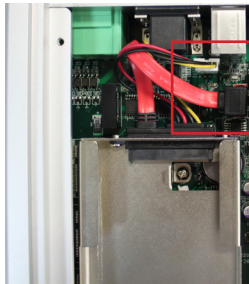
#### 4.1.4. Disassemble SSD bracket

Before Wi-Fi/3G/GPS module Installation, please remove the 2.5 drive bay bracket.

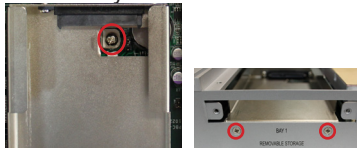
1. Open the Computer as instruction of [4.1.1. Open the Computer on page 44](#).
2. Remove SSD from Bay1.



3. Remove the SATA and SSD power cable from connectors

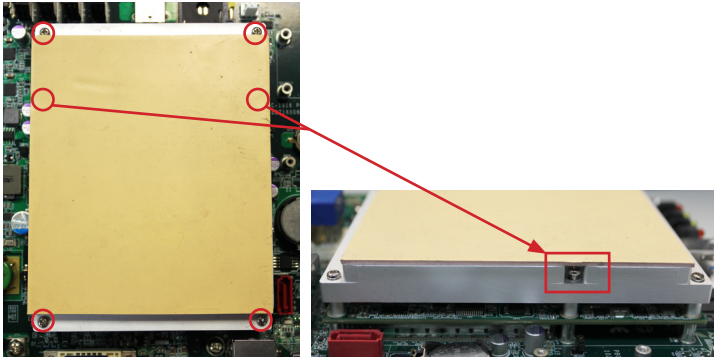


4. Loose the screws of 2.5 drive bay bracket and remove it.

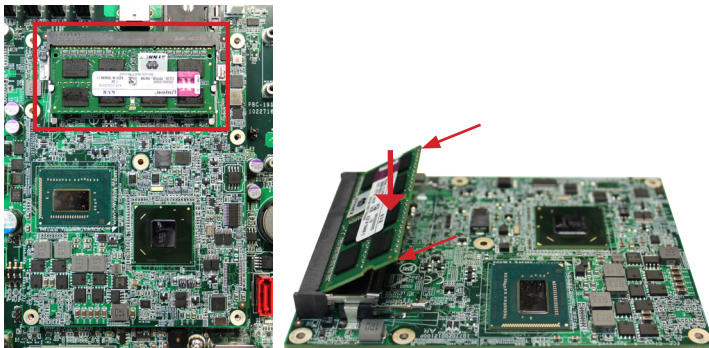


### 4.1.5. Install Memory Module on CPU Module

1. Open the computer as [4.1.1. Open the Computer](#)
2. Loose the 6 screws one the heat sink. Caution: There are two screws under the heat spreading gel.



3. Locate the Memory module slot and insert the memory module.

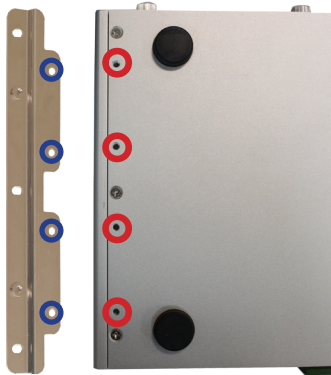


4. Put the heat sink back and fix it by fastening the 6 screws.
5. Assemble the Top cover.

## 4.2. Mount the Computer

Integrate the computer to where it works by mounting it to a wall in the surroundings. Such integration relies on a wall-mount kit, which comes with the computer. Follow through the guide below to assemble the kit to the computer:

1. Place the computer on a flat surface, with the bottom facing up. Find the screw holes at its bottom as marked in the red circles in the illustration below:



2. Have the two wall-mount brackets. Use the screws included in the wall-mount kit to assemble the brackets to the computer's bottom. (See the illustration above).



## Installation & Maintenance

---

3. Use the other screw holes and cutouts on both wall-mount brackets to mount the computer to a wall. (See the green circles in the illustration below).



### 4.3. Wire DC-in Power Source

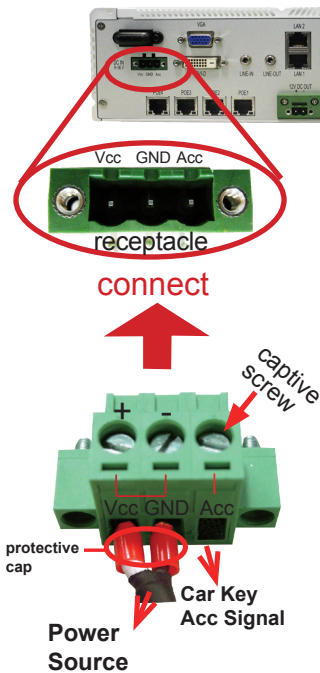


**Warning** Only trained and qualified personnel are allowed to install or replace this equipment.

Follow the instructions below for connecting the computer to a DC-input power source.

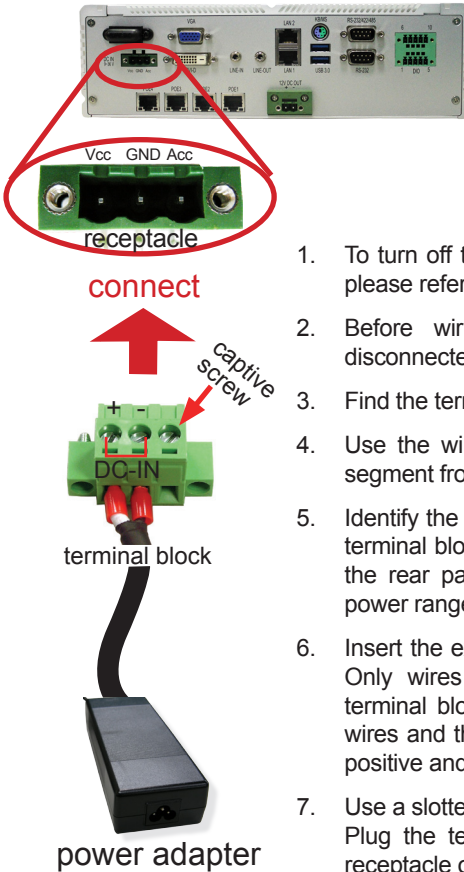
#### 4.31 Vehicle Application

For Vehicle Application, DC power Input wiring pin definition is as follow,



1. To turn on the Vehicle Acc for Vehicle application, please refer to Jumper setting of [JACON1 on page 19](#)
2. Before wiring, make sure the power source is disconnected.
3. Find the terminal block in the accessory box.
4. Use the wire-stripping tool to strip a short insulation segment from the output wires of the DC power source.
5. Identify the positive and negative feed positions for the terminal block connection. See the symbols printed on the rear panel indicating the polarities and DC-input power range in voltage.
6. Insert the exposed wires into the terminal block plugs. Only wires with insulation should extend from the terminal block plugs. Note the polarities between the wires and the terminal block plugs must be positive to positive and negative to negative.
7. Please connect the Acc pin with your car Acc, and the device will be activated when you turn your ignition key to Acc.
8. Use a slotted screwdriver to tighten the captive screws. Plug the terminal block firmly, which wired, into the receptacle on the rear panel.

### 4.3.2 Automation Application



1. To turn off the Vehicle Acc for Automation application, please refer to Jumper setting of [JACON1 on page 19](#)
2. Before wiring, make sure the power source is disconnected.
3. Find the terminal block in the accessory box.
4. Use the wire-stripping tool to strip a short insulation segment from the output wires of the DC power source.
5. Identify the positive and negative feed positions for the terminal block connection. See the symbols printed on the rear panel indicating the polarities and DC-input power range in voltage.
6. Insert the exposed wires into the terminal block plugs. Only wires with insulation should extend from the terminal block plugs. Note the polarities between the wires and the terminal block plugs must be positive to positive and negative to negative.
7. Use a slotted screwdriver to tighten the captive screws. Plug the terminal block firmly, which wired, into the receptacle on the rear panel.



---

# Chapter 5

## BIOS

## BIOS

The BIOS Setup utility for the computer is featured by American Megatrends Inc to configure the system settings stored in the system's BIOS ROM. The BIOS is activated once the computer powers on. When the computer is off, the battery on the main board supplies power to BIOS RAM.

To enter the BIOS Setup utility, keep hitting the "Delete" key upon powering on the computer.

Aptio Setup Utility - Copyright (C) 2012 American Megatrends, Inc.

Main Advanced Chipset Boot Security Save & Exit

BIOS Information  
Project Version ARTS-4770 1.02  
Build Date and Time 03/03/2014 14:21:48

System Date [Fri 04/11/2014]  
System Time [14:04:38]

Access Level Administrator

Choose the system default language.

→←: Select Screen  
↑: Select Item  
Enter: Select  
+/-: Change Opt.  
F1: General Help  
F2: Previous Values  
F9: Optimized Defaults  
F10: Save & Exit  
ESC: Exit

Version 2.15.1236. Copyright (C) 2012 American Megatrends, Inc.

The BIOS Setup utility features the following menus:

Menu	Description
Main	See <a href="#">5.1.1. Main on page 58</a> .
Advanced	See <a href="#">5.1.2. Advanced on page 59</a> .
Chipset	See <a href="#">5.1.3. Chipset on page 69</a> .
Boot	See <a href="#">.5.1.4. Boot on page 74</a>
Security	See <a href="#">.5.1.5. Security on page 76</a>
Save & Exit	See <a href="#">.5.1.6. Save &amp; Exit on page 77</a>

## Key Commands

The BIOS Setup utility relies on a keyboard to receive user's instructions. Hit the following keys to navigate within the utility and configure the utility.

Keystroke	Function
← →	Moves left/right between the top menus.
↓ ↑	Moves up/down between highlight items.
Enter	Selects an highlighted item/field.
Esc	<ul style="list-style-type: none"> <li>▶ On the top menus: Use <b>Esc</b> to quit the utility without saving changes to CMOS. (The screen will prompt a message asking you to select <b>OK</b> or <b>Cancel</b> to exit discarding changes.</li> <li>▶ On the submenus: Use <b>Esc</b> to quit current screen and return to the top menu.</li> </ul>
Page Up / +	Increases current value to the next higher value or switches between available options.
Page Down / -	Decreases current value to the next lower value or switches between available options.
F1	Opens the <b>Help</b> of the BIOS Setup utility.
F10	Exits the utility saving the changes that have been made. (The screen then prompts a message asking you to select <b>OK</b> or <b>Cancel</b> to exit saving changes.)

Note: Pay attention to the "WARNING" that shows at the left pane onscreen when making any change to the BIOS settings.

This BIOS Setup utility is updated from time to time to improve system performance and hence the screenshots hereinafter may not fully comply with what you actually have onscreen.

## 5.1. ARTS-4770 BIOS

This section will guide you to the BIOS Setup utility featured by the ARTS-4770.

### 5.1.1. Main

The **Main** menu features the settings of **System Date** and **System Time** and also displays some BIOS info and system info.

The BIOS info displayed are:

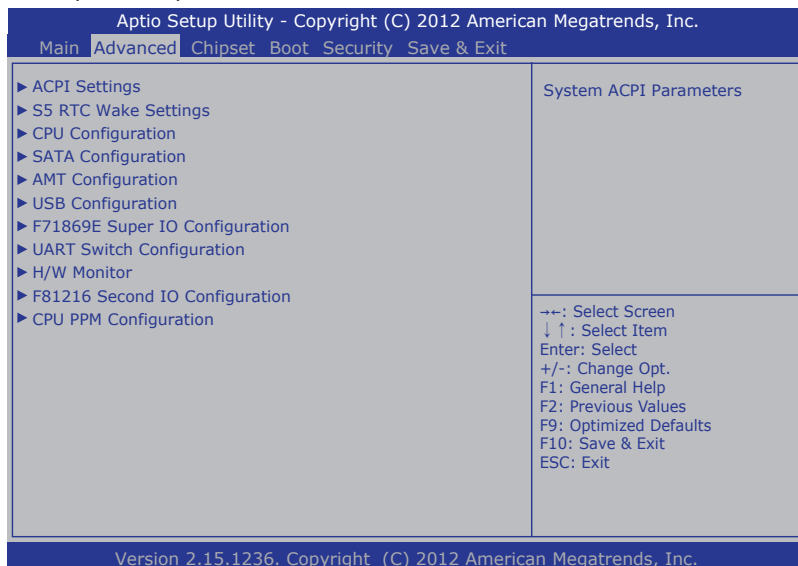
Group	Info	Description
BIOS Information	BIOS Version	Delivers the system's BIOS version.
	Build Date and Time	Delivers the date and time while the BIOS Setup utility was created/updated.
Access Level		Delivers the level that the BIOS is being accessed at the moment. (Only <b>Administrator Level</b> is available.)

The featured settings are:

Setting	Description
System Time	Sets system time.
System Date	Sets system date.

### 5.1.2. Advanced

Access the **Advanced** menu to manage the computer's system configuration including the Super IO chip.



The featured settings and submenus are:

Setting	Description
<b>ACPI Settings</b>	See <a href="#">5.1.2.1. ACPI Settings on page 60.</a>
<b>S5 RTC Wake Settings</b>	See <a href="#">5.1.2.2. S5 RTC Wake Settings on page 60.</a>
<b>CPU Configuration</b>	See <a href="#">5.1.2.3. CPU Configuration on page 61.</a>
<b>SATA Configuration</b>	See <a href="#">5.1.2.4. SATA Configuration on page 62.</a>
<b>AMT Configuration</b>	See <a href="#">5.1.2.5. AMT Configuration on page 63.</a>
<b>USB Configuration</b>	See <a href="#">5.1.2.6. USB Configuration on page 65.</a>
<b>F71869E Super IO Configuration</b>	See <a href="#">5.1.2.7. F71869E Super IO Configuration on page 66.</a>
<b>UART switch setting</b>	See <a href="#">5.1.2.8. UART Switch Setting on page 67.</a>
<b>H/W Monitor</b>	See <a href="#">5.1.2.9. H/W Monitor on page 67.</a>
<b>F81216 Second Super IO Configuration</b>	See <a href="#">5.1.2.10. F81216 Second Super IO Configuration on page 68.</a>
<b>CPU PPM Configuration</b>	See <a href="#">5.1.2.11. CPU PPM Configuration on page 68.</a>

### 5.1.2.1. ACPI Settings

Access this submenu to configure the system’s ACPI (Advanced Configuration and Power Interface). The featured settings are:

The featured settings are:

Setting	Description
<b>Enable Hibernation</b>	<p>Enables/disables the system to/from hibernation (OS/S4 Sleep State).</p> <ul style="list-style-type: none"> <li>▶ This option may not be effective with some OS.</li> <li>▶ <b>Enabled</b> is the default.</li> </ul>

### 5.1.2.2. S5 RTC Wake Settings

Access this submenu to enable/disable the system to wake up on a specified time.

The featured setting is:

Setting	Description								
<b>Wake System with Fixed Time</b>	<p>Sets if to awake the system at a defined moment.</p> <ul style="list-style-type: none"> <li>▶ Options available are <b>Enabled</b> and <b>Disabled</b> (default).</li> <li>▶ Enable this feature to awake the system at a defined moment in time. When enabled, the following settings become available:</li> </ul>								
	<table border="1"> <thead> <tr> <th>Setting</th> <th>Description</th> </tr> </thead> <tbody> <tr> <td><b>Wake up hour</b></td> <td> <p>Defines the (hour) time to awake the system.</p> <ul style="list-style-type: none"> <li>▶ 0 to 23 configurable.</li> </ul> </td> </tr> <tr> <td><b>Wake up minute</b></td> <td> <p>Defines the (minute) time to awake the system.</p> <ul style="list-style-type: none"> <li>▶ 0 to 59 configurable.</li> </ul> </td> </tr> <tr> <td><b>Wake up second</b></td> <td> <p>Defines the (second) time to awake the system.</p> <ul style="list-style-type: none"> <li>▶ 0 to 59 configurable.</li> </ul> </td> </tr> </tbody> </table>	Setting	Description	<b>Wake up hour</b>	<p>Defines the (hour) time to awake the system.</p> <ul style="list-style-type: none"> <li>▶ 0 to 23 configurable.</li> </ul>	<b>Wake up minute</b>	<p>Defines the (minute) time to awake the system.</p> <ul style="list-style-type: none"> <li>▶ 0 to 59 configurable.</li> </ul>	<b>Wake up second</b>	<p>Defines the (second) time to awake the system.</p> <ul style="list-style-type: none"> <li>▶ 0 to 59 configurable.</li> </ul>
	Setting	Description							
	<b>Wake up hour</b>	<p>Defines the (hour) time to awake the system.</p> <ul style="list-style-type: none"> <li>▶ 0 to 23 configurable.</li> </ul>							
<b>Wake up minute</b>	<p>Defines the (minute) time to awake the system.</p> <ul style="list-style-type: none"> <li>▶ 0 to 59 configurable.</li> </ul>								
<b>Wake up second</b>	<p>Defines the (second) time to awake the system.</p> <ul style="list-style-type: none"> <li>▶ 0 to 59 configurable.</li> </ul>								
<b>Wake up minute</b>	<p>Defines the (minute) time to awake the system.</p> <ul style="list-style-type: none"> <li>▶ 0 to 59 configurable.</li> </ul>								
<b>Wake up second</b>	<p>Defines the (second) time to awake the system.</p> <ul style="list-style-type: none"> <li>▶ 0 to 59 configurable.</li> </ul>								
<b>Wake System with Dynamic Time</b>	<p>Sets if to awake the system some time in the future.</p> <ul style="list-style-type: none"> <li>▶ Options available are <b>Enabled</b> and <b>Disabled</b> (default).</li> <li>▶ Enable this feature to awake the system some time from now. When enabled, the following setting becomes available:</li> </ul>								
	<table border="1"> <thead> <tr> <th>Setting</th> <th>Description</th> </tr> </thead> <tbody> <tr> <td><b>Wake up minute increase</b></td> <td> <p>Defines how long from now to awake the system.</p> <ul style="list-style-type: none"> <li>▶ 1 to 5 minutes configurable.</li> </ul> </td> </tr> </tbody> </table>	Setting	Description	<b>Wake up minute increase</b>	<p>Defines how long from now to awake the system.</p> <ul style="list-style-type: none"> <li>▶ 1 to 5 minutes configurable.</li> </ul>				
Setting	Description								
<b>Wake up minute increase</b>	<p>Defines how long from now to awake the system.</p> <ul style="list-style-type: none"> <li>▶ 1 to 5 minutes configurable.</li> </ul>								

### 5.1.2.3. CPU Configuration

Select **CPU Configuration** to run a report of the CPU's details including the hardware version, software version, model name, processor speed, microcode revision, max./min. processor speeds, the amount of processor core(s), and CPU caches. See the depiction below:

Aptio Setup Utility - Copyright (C) 2012 American Megatrends, Inc.	
Main <b>Advanced</b> Chipset Boot Security Save & Exit	
CPU Configuration	
Intel(R) Core(TM) CPU i7-3517UE @ 1.70GHz	
CPU Signature	306a9
Microcode Patch	ffff0006
Max CPU Speed	2000 MHz
Min CPU Speed	800 MHz
CPU Speed	2200 MHz
Processor Cores	4
Intel HT Technology	Supported
Intel VT-x Technology	Supported
Intel SMX Technology	Supported
64-bit	Supported
L1 Data Cache	32 kB x 2
L1 Code Cache	32 kB x 2
L2 Cache	256 kB x 2
L3 Cache	4096 kB
	→←: Select Screen ↓↑: Select Item Enter: Select +/-: Change Opt. F1: General Help F2: Previous Values F9: Optimized Defaults F10: Save & Exit ESC: Exit
Version 2.15.1236. Copyright (C) 2012 American Megatrends, Inc.	

### 5.1.2.4. SATA Configuration

**SATA Configuration** delivers SATA device(s) information and configures SATA device(s).

The featured settings are:

Setting	Description										
<b>SATA Controller(s)</b>	Enables/disables SATA device(s). ▶ <b>Enabled</b> is the default.										
<b>SATA Mode Selection</b>	Configures how SATA controller(s) operate. ▶ Options available are <b>IDE</b> (default), <b>AHCI</b> and <b>RAID</b> .										
<b>Configure SATA as</b>	Configures how SATA controller(s) operate. ▶ Options available are <b>AHCI</b> (default) and <b>IDE</b> . ▶ When set to <b>AHCI</b> , the following settings become available:										
	<table border="1"> <thead> <tr> <th>Setting</th> <th>Description</th> </tr> </thead> <tbody> <tr> <td><b>SATA Port 0</b></td> <td>Enables/disables SATA port 0. ▶ <b>Enabled</b> is the default.</td> </tr> <tr> <td><b>SATA Port 0 Hot Plug</b></td> <td>Enables/disables the hot pluggable feature for SATA port 0. ▶ <b>Enabled</b> is the default.</td> </tr> <tr> <td><b>SATA Port 1</b></td> <td>Enables/disables SATA port 1. ▶ <b>Enabled</b> is the default.</td> </tr> <tr> <td><b>SATA Port 1 Hot Plug</b></td> <td>Enables/disables the hot pluggable feature for SATA port 1. ▶ <b>Enabled</b> is the default.</td> </tr> </tbody> </table>	Setting	Description	<b>SATA Port 0</b>	Enables/disables SATA port 0. ▶ <b>Enabled</b> is the default.	<b>SATA Port 0 Hot Plug</b>	Enables/disables the hot pluggable feature for SATA port 0. ▶ <b>Enabled</b> is the default.	<b>SATA Port 1</b>	Enables/disables SATA port 1. ▶ <b>Enabled</b> is the default.	<b>SATA Port 1 Hot Plug</b>	Enables/disables the hot pluggable feature for SATA port 1. ▶ <b>Enabled</b> is the default.
	Setting	Description									
	<b>SATA Port 0</b>	Enables/disables SATA port 0. ▶ <b>Enabled</b> is the default.									
	<b>SATA Port 0 Hot Plug</b>	Enables/disables the hot pluggable feature for SATA port 0. ▶ <b>Enabled</b> is the default.									
<b>SATA Port 1</b>	Enables/disables SATA port 1. ▶ <b>Enabled</b> is the default.										
<b>SATA Port 1 Hot Plug</b>	Enables/disables the hot pluggable feature for SATA port 1. ▶ <b>Enabled</b> is the default.										



### 5.1.2.5. AMT Configuration

Intel® Active Management Technology (Intel® AMT) is a hardware-based solution that uses out-of-band communication for basic management of client systems, which allows a system administrator to monitor and manage the computers and other network equipment by remote control even if the hard drive is crashed, the system is turned off or the operating system is locked.

Aptio Setup Utility - Copyright (C) 2012 American Megatrends, Inc.

Advanced

Intel AMT BIOS Hotkey Pressed MEBx Selection Screen Hide Un-Configure ME Confirmation MEBx Debug Message Output Un-Configure ME Amt Wait Timer Disable ME ASF Activate Remote Assistance Process USB Configure PET Progress AMT CIRA Timeout	[Enabled] [Disabled] [Disabled] [Disabled] [Disabled] [Disabled] 0 [Disabled] [Enabled] [Disabled] [Enabled] [Enabled]	Enable/Disable Intel (R) Active Management Technology BIOS Extension. Note: iAMT H/W is always enabled. This option just controls the BIOS extension execution. If enabled, this requires additional firmware in the SPI device.  ++: Select Screen ↑↓: Select Item Enter: Select +/-: Change Opt. F1: General Help F2: Previous Values F9: Optimized Defaults F10: Save & Exit ESC: Exit
--	---	---

Version 2.15.1236. Copyright (C) 2012 American Megatrends, Inc.

The featured settings are:

Setting	Description
<b>Intel AMT</b>	Enables/disables Intel® Active Management Technology BIOS extensions. ▶ <b>Enabled</b> is the default. <b>Note.</b> iAMT hardware is always enabled. This setting only controls BIOS extension execution. When enabled, additional firmware is required in the SPI device.
<b>BIOS Hotkey Pressed</b>	Enables/disables BIOS Hotkey Press function ▶ <b>Disabled</b> is the default.

<b>MEBx Selection Screen</b>	Enables/disables MEBx Selection Screen function. ▶ <b>Disabled</b> is the default.
<b>Hide Un-Configure ME Confirmation</b>	Enables/disables Hide Un-Configure ME without password Configuration Prompt function. ▶ <b>Disabled</b> is the default.
<b>MEBx Debug Message Output</b>	Enables/disables MEBx Debug Message Output function. ▶ <b>Disabled</b> is the default.
<b>Un-Configure ME</b>	Enables/disables Un-Configure ME without password function. ▶ <b>Disabled</b> is the default.
<b>Amt Wait Timer</b>	Set time to wait before sending ASF_GET_BOOT_OPTIONS.
<b>Disable ME</b>	Set ME to soft Temporary Disabled function
<b>ASF</b>	Enables/disables Alert Specification Format, a DMTF (Distributed Management Task Force) standard for remote monitoring, management and control of computer system in both OS-present and OS-absent environments. ▶ <b>Enabled</b> is the default.
<b>Activate Remote Assistance Process</b>	Enables/disables CIRA (Client-Initiated Remote Access) boot. ▶ <b>Disabled</b> is the default.
<b>USB Configure</b>	Enables/disables USB Configure function. ▶ <b>Disabled</b> is the default.
<b>PET Progress</b>	Enables/disables PET events progress to receive PET event or not.
<b>AMT CIRA Timeout</b>	Customizes the time-out for the establishment of MPS connection. ▶ This setting is only available when <b>Activate Remote Assistance Process</b> is enabled. ▶ Set it to 0 to use the default time-out value of 60 seconds. ▶ Set it to 255 to have MEBx wait until the connection succeeds. ▶ CIRA means "Client Initiated Remote Access".

### 5.1.2.6. USB Configuration

Access this submenu to view the USB device(s) enabled in the system. It also configures USB-related features.

The featured settings are:

Setting	Description / Available Options								
<b>Legacy USB Support</b>	Enables/disables legacy USB support including USB flash drives and USB hard drives. Options available are <ul style="list-style-type: none"> <li>▶ <b>Enabled:</b> To enable legacy USB support.</li> <li>▶ <b>Disabled:</b> To keep USB devices available only for EFI specification,</li> <li>▶ <b>Auto:</b> To disable legacy support if no USB devices are connected.</li> </ul>								
<b>USB3.0 Support</b>	Enables/disables USB 3.0 controller support. ▶ <b>Enabled</b> is the default.								
<b>XHCI Hand-off</b>	This is a workaround for OSeS without XHCI hand-off support. The XHCI ownership change should be claimed by XHCI driver. The optional settings are: <b>Enabled / Disabled</b> .								
<b>EHCI Hand-off</b>	This is a workaround for OSeS without EHCI hand-off support. The EHCI ownership change should be claimed by EHCI driver. The optional settings are: <b>Disabled / Enabled</b> .								
<b>USB Mass Storage Driver Support</b>	Enables/disables USB Mass Storage Driver Support. The optional settings are: <b>Disabled / Enabled</b> .								
<b>USB hardware delay and time-out</b>	This is a submenu to configure the features of USB hardware delay and time-out. The featured settings are:								
	<table border="1"> <thead> <tr> <th>Setting</th> <th>Description</th> </tr> </thead> <tbody> <tr> <td><b>USB Transfer time-out</b></td> <td>Use this item to set the time-out value for control, bulk, and interrupt transfers. ▶ Options available are: <b>1 sec, 5 sec, 10 sec, 20 sec</b></td> </tr> <tr> <td><b>Device reset time-out</b></td> <td>Use this item to set USB mass storage device start unit command time-out. ▶ Options available are: <b>10 sec, 20 sec, 30 sec, 40 sec</b></td> </tr> <tr> <td><b>Device power-up delay</b></td> <td>Use this item to set maximum time the device will take before it properly reports itself to the host controller. 'Auto' uses default value: for a root port it is 100 ms, for a hub port the delay is taken from hub descriptor. ▶ Options available are: <b>Auto:</b> Default <b>Manual:</b> Select <b>Manual</b> you can set value for the following sub-item: 'Device Power-up delay in seconds', the delay range in from 1 to 40 seconds, in one second increments.</td> </tr> </tbody> </table>	Setting	Description	<b>USB Transfer time-out</b>	Use this item to set the time-out value for control, bulk, and interrupt transfers. ▶ Options available are: <b>1 sec, 5 sec, 10 sec, 20 sec</b>	<b>Device reset time-out</b>	Use this item to set USB mass storage device start unit command time-out. ▶ Options available are: <b>10 sec, 20 sec, 30 sec, 40 sec</b>	<b>Device power-up delay</b>	Use this item to set maximum time the device will take before it properly reports itself to the host controller. 'Auto' uses default value: for a root port it is 100 ms, for a hub port the delay is taken from hub descriptor. ▶ Options available are: <b>Auto:</b> Default <b>Manual:</b> Select <b>Manual</b> you can set value for the following sub-item: 'Device Power-up delay in seconds', the delay range in from 1 to 40 seconds, in one second increments.
	Setting	Description							
	<b>USB Transfer time-out</b>	Use this item to set the time-out value for control, bulk, and interrupt transfers. ▶ Options available are: <b>1 sec, 5 sec, 10 sec, 20 sec</b>							
<b>Device reset time-out</b>	Use this item to set USB mass storage device start unit command time-out. ▶ Options available are: <b>10 sec, 20 sec, 30 sec, 40 sec</b>								
<b>Device power-up delay</b>	Use this item to set maximum time the device will take before it properly reports itself to the host controller. 'Auto' uses default value: for a root port it is 100 ms, for a hub port the delay is taken from hub descriptor. ▶ Options available are: <b>Auto:</b> Default <b>Manual:</b> Select <b>Manual</b> you can set value for the following sub-item: 'Device Power-up delay in seconds', the delay range in from 1 to 40 seconds, in one second increments.								

### 5.1.2.7. F71869E Super IO Configuration

This submenu opens in context with the system's serial ports, COM1 and COM2, to configure the Super IO chipset.

The featured settings are:

Submenu/Setting	Description								
<b>Serial Port 1 Configuration</b>	Configures the system's serial port (COM port). The featured settings are:								
	<table border="1"> <thead> <tr> <th>Setting</th> <th>Description</th> </tr> </thead> <tbody> <tr> <td><b>Serial Port</b></td> <td>Enables/disables the serial port. ▶ <b>Enabled</b> is the default.</td> </tr> <tr> <td><b>Serial Port 1 Interface</b></td> <td>▶ Options available are: <b>RS422 /RS232 / RS485</b></td> </tr> <tr> <td><b>Change Settings</b></td> <td>Sets the optimal IO address and IRQ info for the serial port. ▶ Options available are: <b>IO=3F8h; IRQ=4 (default)</b> <b>IO=3F8h; IRQ=3,4,5,6,7,9,10,11,12;</b> <b>IO=2F8h; IRQ=3,4,5,6,7,9,10,11,12;</b> <b>IO=3E8h; IRQ=3,4,5,6,7,9,10,11,12;</b> <b>IO=2E8h; IRQ=3,4,5,6,7,9,10,11,12;</b></td> </tr> </tbody> </table>	Setting	Description	<b>Serial Port</b>	Enables/disables the serial port. ▶ <b>Enabled</b> is the default.	<b>Serial Port 1 Interface</b>	▶ Options available are: <b>RS422 /RS232 / RS485</b>	<b>Change Settings</b>	Sets the optimal IO address and IRQ info for the serial port. ▶ Options available are: <b>IO=3F8h; IRQ=4 (default)</b> <b>IO=3F8h; IRQ=3,4,5,6,7,9,10,11,12;</b> <b>IO=2F8h; IRQ=3,4,5,6,7,9,10,11,12;</b> <b>IO=3E8h; IRQ=3,4,5,6,7,9,10,11,12;</b> <b>IO=2E8h; IRQ=3,4,5,6,7,9,10,11,12;</b>
	Setting	Description							
	<b>Serial Port</b>	Enables/disables the serial port. ▶ <b>Enabled</b> is the default.							
<b>Serial Port 1 Interface</b>	▶ Options available are: <b>RS422 /RS232 / RS485</b>								
<b>Change Settings</b>	Sets the optimal IO address and IRQ info for the serial port. ▶ Options available are: <b>IO=3F8h; IRQ=4 (default)</b> <b>IO=3F8h; IRQ=3,4,5,6,7,9,10,11,12;</b> <b>IO=2F8h; IRQ=3,4,5,6,7,9,10,11,12;</b> <b>IO=3E8h; IRQ=3,4,5,6,7,9,10,11,12;</b> <b>IO=2E8h; IRQ=3,4,5,6,7,9,10,11,12;</b>								
<b>Serial Port 2 Configuration</b>	Configures the system's serial port (COM port). The featured settings are:								
	<table border="1"> <thead> <tr> <th>Setting</th> <th>Description</th> </tr> </thead> <tbody> <tr> <td><b>Serial Port</b></td> <td>Enables/disables the serial port. ▶ <b>Enabled</b> is the default.</td> </tr> <tr> <td><b>Serial Port 2 interface</b></td> <td>▶ Options available are: <b>RS422 /RS232 / RS485</b></td> </tr> <tr> <td><b>Change Settings</b></td> <td>Sets the optimal IO address and IRQ info for the serial port. ▶ Options available are: <b>IO=2F8h; IRQ=3 (default)</b> <b>IO=3F8h; IRQ=3,4,5,6,7,9,10,11,12;</b> <b>IO=2F8h; IRQ=3,4,5,6,7,9,10,11,12;</b> <b>IO=3E8h; IRQ=3,4,5,6,7,9,10,11,12;</b> <b>IO=2E8h; IRQ=3,4,5,6,7,9,10,11,12;</b></td> </tr> </tbody> </table>	Setting	Description	<b>Serial Port</b>	Enables/disables the serial port. ▶ <b>Enabled</b> is the default.	<b>Serial Port 2 interface</b>	▶ Options available are: <b>RS422 /RS232 / RS485</b>	<b>Change Settings</b>	Sets the optimal IO address and IRQ info for the serial port. ▶ Options available are: <b>IO=2F8h; IRQ=3 (default)</b> <b>IO=3F8h; IRQ=3,4,5,6,7,9,10,11,12;</b> <b>IO=2F8h; IRQ=3,4,5,6,7,9,10,11,12;</b> <b>IO=3E8h; IRQ=3,4,5,6,7,9,10,11,12;</b> <b>IO=2E8h; IRQ=3,4,5,6,7,9,10,11,12;</b>
	Setting	Description							
	<b>Serial Port</b>	Enables/disables the serial port. ▶ <b>Enabled</b> is the default.							
<b>Serial Port 2 interface</b>	▶ Options available are: <b>RS422 /RS232 / RS485</b>								
<b>Change Settings</b>	Sets the optimal IO address and IRQ info for the serial port. ▶ Options available are: <b>IO=2F8h; IRQ=3 (default)</b> <b>IO=3F8h; IRQ=3,4,5,6,7,9,10,11,12;</b> <b>IO=2F8h; IRQ=3,4,5,6,7,9,10,11,12;</b> <b>IO=3E8h; IRQ=3,4,5,6,7,9,10,11,12;</b> <b>IO=2E8h; IRQ=3,4,5,6,7,9,10,11,12;</b>								
<b>Power On After Power Fail</b>	Set the power state after a power outage. Select <b>Power Off</b> for the system power to remain off after a power loss. Select <b>Power On</b> for the system power to be turned on after a power loss. ▶ Options available are: <b>Power On / Power Off (Default)</b>								

### 5.1.2.8. UART Switch Setting

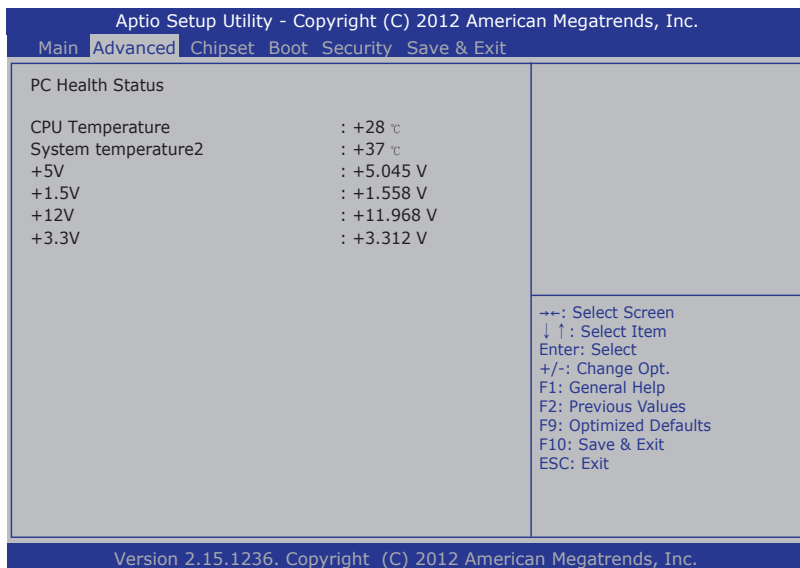
Access this **UART Switch Setting** to set the data transmission interface for the computer's serial port COM1.

The featured setting is:

Setting	Description
<b>Serial Port 2:</b>	Configures the data transmission interface for the computer's serial port COM1. <ul style="list-style-type: none"> <li>Options available are <b>RS232 Support</b> (default), <b>RS422 Support</b> and <b>RS488 Support</b></li> </ul>

### 5.1.2.9. H/W Monitor

**H/W Monitor** monitors the computer's hardware status. Select this submenu to run a report of the info including CPU/system temperatures, CPU speed and other voltage info.



### 5.1.2.10. F81216 Second Super IO Configuration

Use this submenu to enable/disable the computer's serial ports 0~1.

The featured submenus are:

Submenu	Description	
Serial Port 0 Configuration	Configures the computer's Serial Port 0, which is fixed to RS232 and cannot be changed. The featured settings are:	
	Setting	Description
	Serial Port	Enables/disables the serial port. ▶ <b>Enabled</b> is the default.
Serial Port 1 Configuration	Configures the computer's Serial Port 1, which is fixed to RS232 and cannot be changed. The featured settings are:	
	Setting	Description
	Serial Port	Enables/disables the serial port. ▶ <b>Enabled</b> is the default.

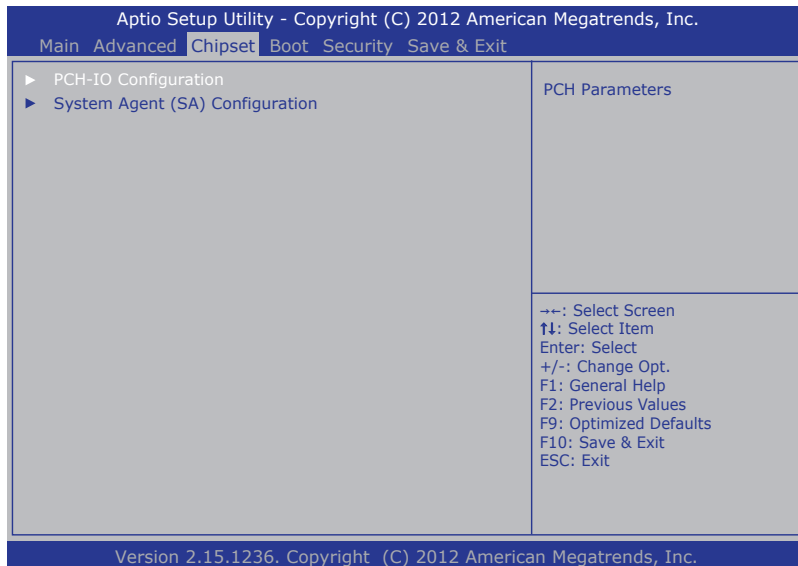
### 5.1.2.11. CPU PPM Configuration

Use this submenu to enable/disable the CPU PPM Turbo mode.

Submenu	Description
Turbo Mode	Enables/disables the CPU PPM Turbo Mode. ▶ <b>Enabled</b> is the default.

### 5.1.3. Chipset

The **Chipset** menu controls the system's chipset, including the north bridge and the south bridge.



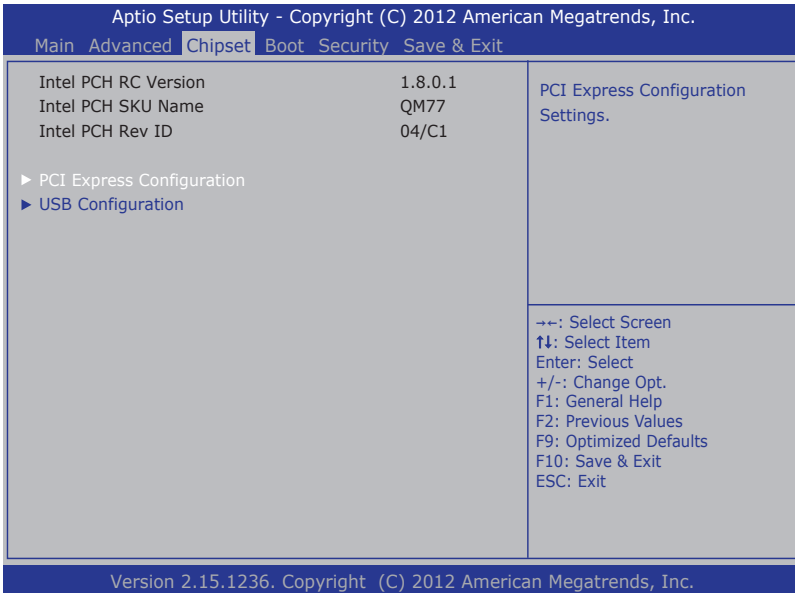
The featured submenu are **System Agent (SA) Configuration** and **PCH-IO Configuration**, which are covered in the following sections:

Submenu	Description
<b>PCH-IO Configuration</b>	Configures the PCH. ▶ See <a href="#">5.1.3.1. PCH IO Configuration on page 70</a> for more details.
<b>System Agent (SA) Configuration</b>	Configures System Agent, i.e. the north bridge. ▶ See <a href="#">5.1.3.2. System Agent (SA) Configuration on page 72</a> for more details.

**WARNING:** Wrong settings in these submenus may cause system malfunction.

### 5.1.3.1. PCH IO Configuration

Access this submenu to configure PCH parameters.



The featured submenu is:

Setting/Submenu	Description
<b>PCI Express Configuration</b>	See <a href="#">5.1.3.1.1. PCI Express Configuration on page 71.</a>
<b>USB Configuration</b>	See <a href="#">5.1.3.1.2. USB Configuration on page 71.</a>



### 5.1.3.1.1. PCI Express Configuration

Access this submenu for the following settings:

Setting	Description
<b>PCI Express Root Port 1,2,3,5,6,7,8</b>	Enables/disables PCI Express root port 0. ▶ <b>Enabled</b> is the default.
	▶ ASPM Support Options are: <b>Disable</b> : disables ASPM <b>L0s</b> : force all links to L0s state <b>L1</b> : force all links to L1 state <b>L0sL1</b> : force all links to L0s+L1 state <b>Auto</b> : BIOS auto configure ▶ PCIe Speed Options are: <b>Auto</b> , <b>Gen 1</b> , <b>Gen 2</b> <b>Auto</b> is the default.

### 5.1.3.1.2. USB Configuration

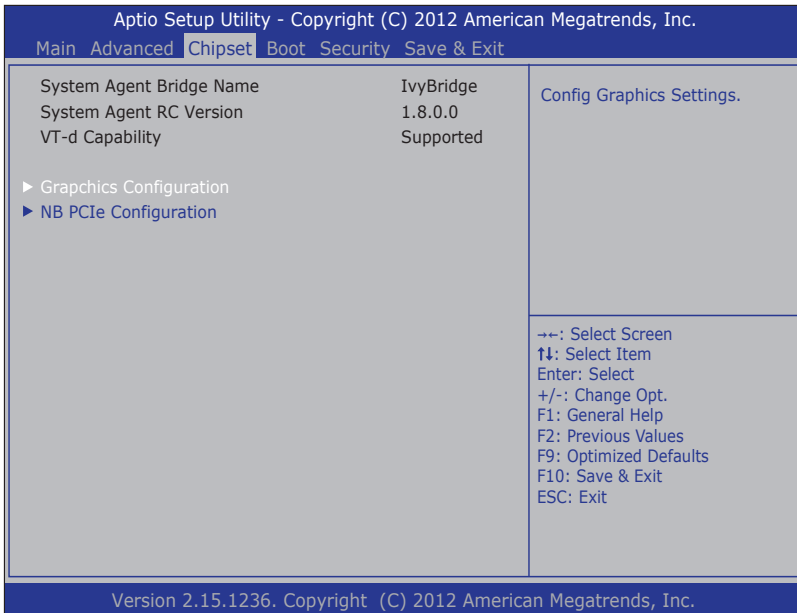
Access this submenu to configure the system's USB ports.

The featured settings are:

Setting	Description
<b>EHC11</b>	Enables/disables the USB EHCI (USB 2.0) functions. ▶ <b>Enabled</b> is the default.
<b>EHC12</b>	Enables/disables the USB EHCI (USB 2.0) functions. ▶ <b>Enabled</b> is the default.

### 5.1.3.2. System Agent (SA) Configuration

Access this submenu to configure the system agent.



The featured settings are:

Setting / Submenu	Description
<b>Graphics Configuration</b>	Configures the system's graphics. See <a href="#">5.1.3.2.1. Graphics Configuration on page 73</a> .
<b>Memory Configuration</b>	See <a href="#">5.1.3.2.2. Memory Configuration on page 73</a> .

### 5.1.3.2.1. Graphics Configuration

Access this submenu to configure the system's Graphics. Select **Graphics Configuration** to view graphics info and accesses graphics settings.

The featured settings are:

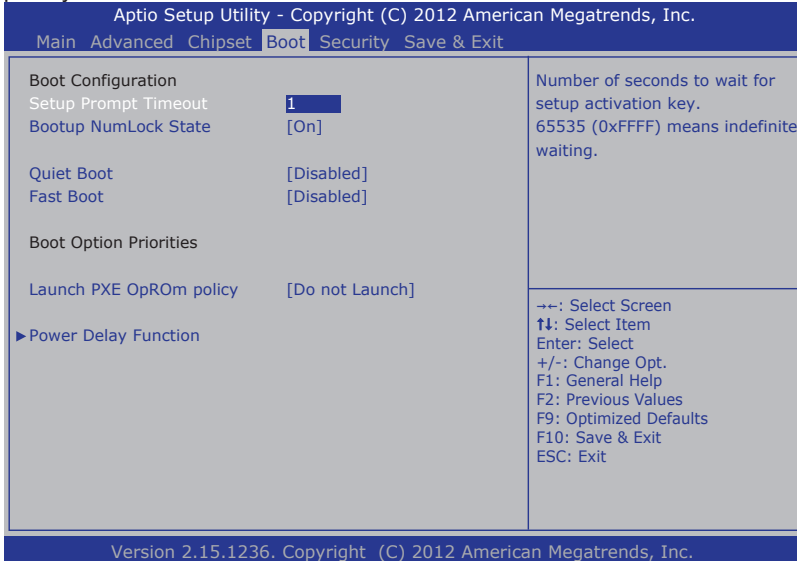
Setting	Description
<b>Primary Display</b>	Select which of IGFX/PEG/PCI graphic device to be the Primary Display or SG for Switch Gfx. <ul style="list-style-type: none"> <li>▶ Options available are <b>Auto(default), IGFX, PEG, PCI, SG.</b></li> </ul>
<b>Internal Graphics</b>	Keep IGD enabled based on the setup options. <ul style="list-style-type: none"> <li>▶ Options available are <b>Auto(default), Disabled, Enabled.</b></li> </ul>
<b>Primary IGFX Boot Display</b>	Sets the graphics device to activate during POST. <ul style="list-style-type: none"> <li>▶ This setting has no effect if an external graphics is present.</li> <li>▶ CRT modes are only supported on the primary display.</li> <li>▶ Options available are <b>CRT, and CRT+DVI(default).</b></li> </ul>
<b>Second IGFX Boot device</b>	Select second display device <ul style="list-style-type: none"> <li>▶ Options available are <b>Disabled(default), CRT, CRT+DVI, LFP, EFP3, EFP2, LFP2.</b></li> </ul>

### 5.1.3.2.2. Memory Configuration

Delivers the system's memory configuration that includes memory RC version, memory frequency, total memory, DIMM presence, CAS latency and minimum delay time.

5.1.4. Boot

Access this **Boot** menu to configure how to boot up the system such as boot device priority.



The featured settings and submenu are:

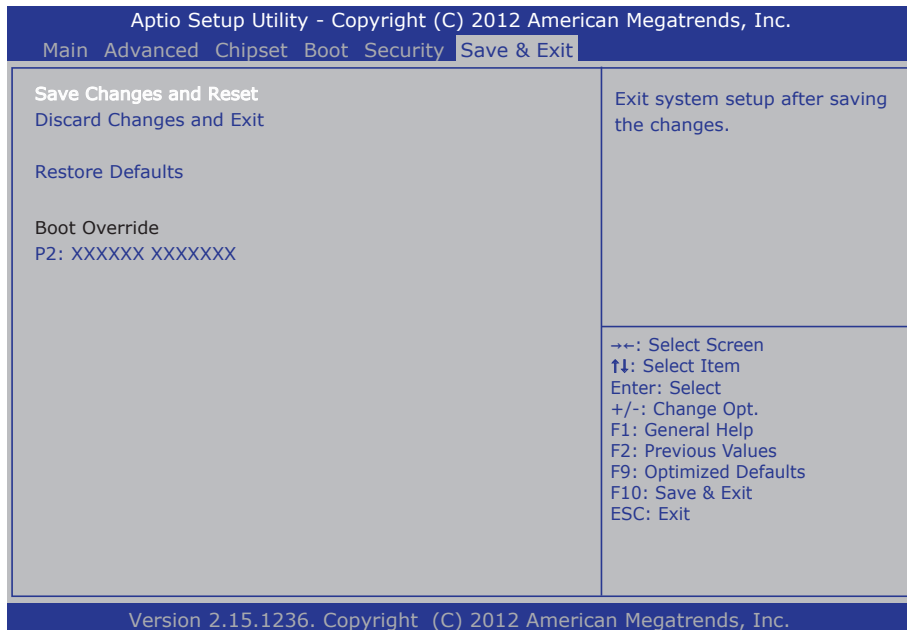
Group	Setting	Description
Boot Configuration	<b>Bootup NumLock State</b>	Sets whether to enable or disable the keyboard's NumLock state when the system starts up. ▶ Options available are <b>On</b> (default) and <b>Off</b> .
	<b>Quiet Boot</b>	Sets whether to display the POST (Power-on Self Tests) messages or the system manufacturer's full screen logo during booting. ▶ Leave it as <b>Disabled</b> , which is the default, to display the normal POST message.
	<b>Fast Boot</b>	Enables/disables initializing only a minimal set of devices required to launch the active boot options when booting up the system. ▶ <b>Disabled</b> is the default. ▶ This setting has no effect for BBS (BIOS Boot Specification) options.

<b>Boot Option Priorities</b>	Sets the boot priority among the available device types.	
<b>Launch PXE OpROM policy</b>	Configures whether to launch the UEFI or legacy OpROM of PXE (Preboot eXecution Environment). ▶ Options available are <b>Do not launch</b> (default), and <b>Legacy only</b> .	
<b>Power Delay Function</b>	Configures power delay function by the following settings:	
	<b>Setting</b>	<b>Description</b>
	<b>Power Delay Function</b>	Enables/disables power delay function: ▶ <b>Enable</b> is the default. ▶ Select <b>Disabled</b> to manually power on/off..
	<b>Power on delay</b>	Configures how much time should be delayed for the system to power on. ▶ Options available are <b>Immediately</b> , <b>04 Seconds</b> (default), <b>08 Seconds</b> and <b>16 Seconds</b> .
<b>Power off delay</b>	Configures how much time should be delayed for the system to power off. ▶ Options available are <b>Immediately</b> (default), <b>30 Seconds</b> , <b>60 Seconds</b> and <b>90 Seconds</b> .	



### 5.1.6. Save & Exit

The **Save & Exit** menu features a handful of commands to launch actions from the BIOS Setup utility regarding saving changes, quitting the utility and recovering defaults.



The featured settings are:

Setting	Description
<b>Save Changes and Exit</b>	Saves the changes and exits the BIOS setup. <ul style="list-style-type: none"> <li>▶ This is a command to launch action from the BIOS Setup utility rather than a setting.</li> </ul>
<b>Discard Changes and Exit</b>	Quits the BIOS Setup utility without saving the change(s).
<b>Restore Defaults</b>	Restores all settings to factory defaults. <ul style="list-style-type: none"> <li>▶ This is a command to launch action from the BIOS Setup utility rather than a setting.</li> </ul>
<b>Boot Override</b>	Shows a list of the available boot devices in the system so users can boot up the system by any of the listed devices regardless of the currently configured boot priority. <ul style="list-style-type: none"> <li>▶ This is a command to launch action from the BIOS Setup utility rather than a setting.</li> </ul>

---

This page is intentionally left blank.



---

# Appendices

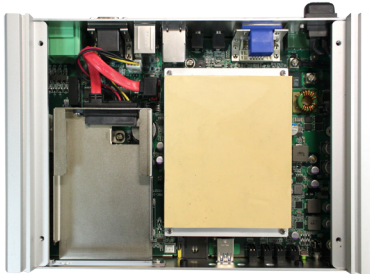
## Appendix A: HSPA-SI1400 Hardware Installation

To be able to network with 3G, hardware-wise the computer needs a 3G module installed and a SIM card inserted (as described in [\\_](#) on page [44](#)). This appendix will guide you to install the 3G module **HSPA-SI1400**.

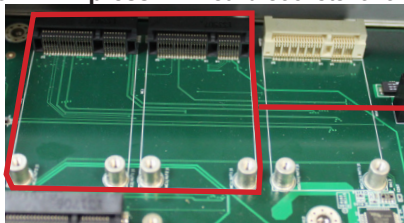
### C.1. Install HSPA-SI1400

1. Remove the computer's top cover as described in [4.1.1. Open the Computer](#) on page [44](#).

The inside of the computer comes to view.

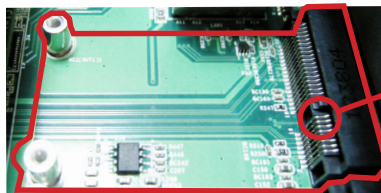


2. To remove the SSD bracket, please refer to [4.1.4. Disassemble SSD bracket on page 49](#)
3. Find the two **PCI Express Mini-card** sockets for a 3G module or a WiFi module.



Two Mini PCIe card sockets

The socket has a break among the connector .

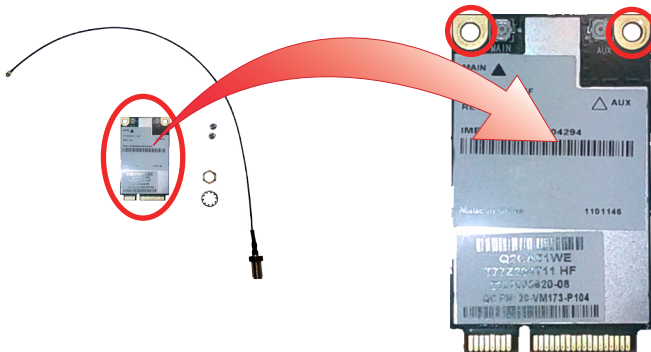


connector break

**Mini-card socket**

4. Have the **HSPA-SI1400** 3G module kit. The 3G module is a full-size module of **PCI Express Mini-card** form factor, with two U.FL connectors, one is "MAIN", and the other is "AUX".

Two U.FL connectors, one is "MAIN", the other is "AUX".



5. Plug the 3G module to the socket's connector by a slanted angle. Fully plug the module, and note the notch on the wireless module should meet the break of the connector.



Connector break

Fully plug the module.

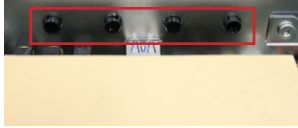
6. Press down the module and fix the module in place using two screws.



## Appendices

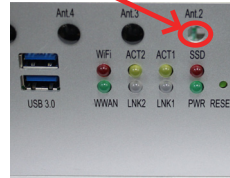
7. Remove one plastic plug from the computer's front panel to make an antenna hole. Keep the plastic plug for any possible restoration in the future.

Antenna holes stopped up by plugs



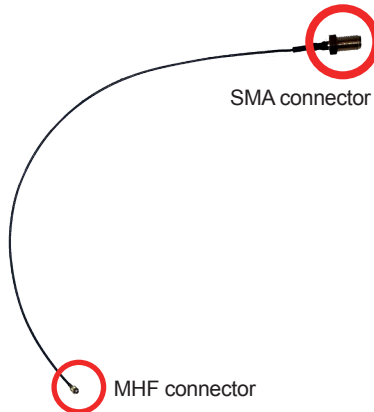
a view from the inside of the computer

an antenna hole w/o the plug



a view outside the computer

8. Have the RF antenna. The antenna has an SMA connector on one end and an MHF connector on the other.



9. Connect the RF antenna's MHF connector to the 3G module's "MAIN" connector.

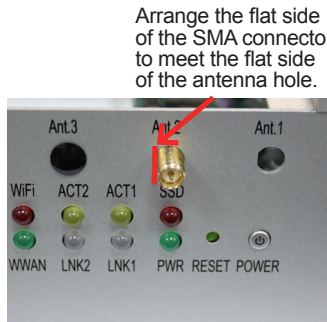
Connect the RF antenna's MHF connector to the 3G module's "MAIN" connector.



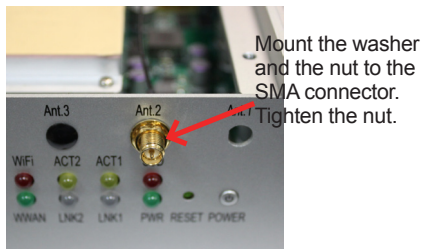
- From the other end of the RF antenna, which is an SMA connector, remove the washer and the nut. Save the washer and nut for later use. Note the SMA connector has the form of a threaded bolt, with one flattened side.



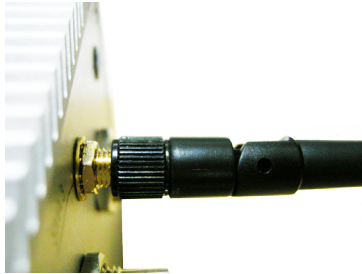
- Pull the SMA connector through the above mentioned antenna hole. Note to meet the aforesaid flattened side with the antenna hole's flat side.



- Mount the washer first and then the nut to the SMA connector. Make sure the nut is tightened.



13. Have an external antenna. Screw and tightly fasten the antenna to the SMA connector.



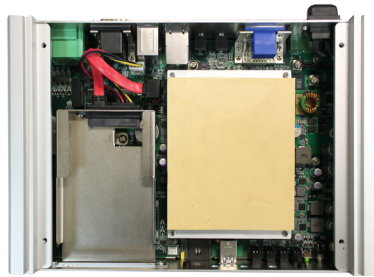
## Appendix B: WIFI-AT2350 Hardware Installation

To use Wi-Fi, hardware-wise the computer needs a Wi-Fi module installed. This appendix will guide you to install the Wi-Fi module **WIFI-AT2350**.

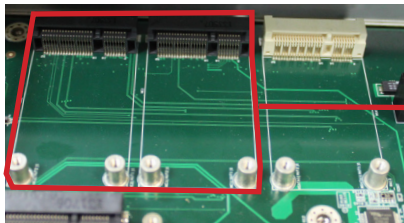
### D.1. Install WIFI-AT2350

1. Remove the computer's top cover as described in [4.1.1. Open the Computer](#) on page [44](#).

The inside of the computer comes to view.

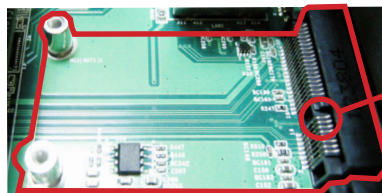


2. To remove the SSD bracket, please refer to [4.1.4. Disassemble SSD bracket on page 49](#)
3. Find the two **PCI Express Mini-card** sockets for a 3G module or a WiFi module.



Two Mini PCIe card sockets

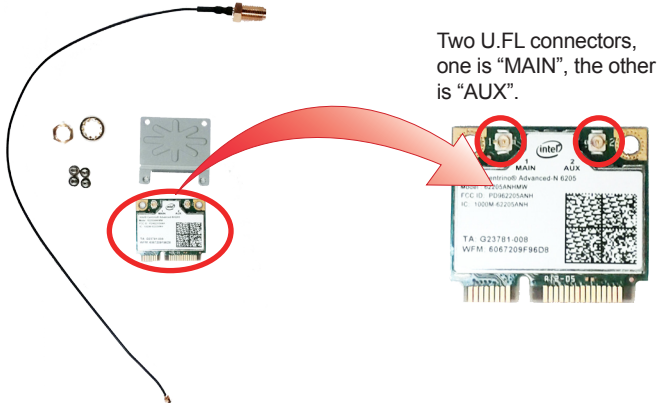
The socket has a break among the connector .



connector break

**Mini-card socket**

4. Prepare the **WiFi-AT2350** Wi-Fi module kit. The module is a half-size module of **PCI Express Mini-card** form factor, with two U.FL connectors, one is “MAIN”, and the other is “AUX”.



5. In order to make the half-size Wi-Fi module compatible with the **Mini-card** socket, extend the WiFi module with a “mini half bracket”. Join them together by using two screws.



Position the WiFi module and the “mini half bracket” exactly as shown.



Join the WiFi module and the “mini half bracket” by using two screws.



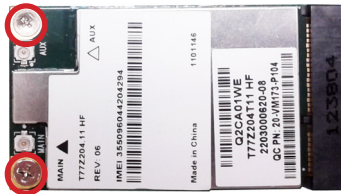
- Plug the Wi-Fi module to the socket's connector by a slanted angle. Fully plug the module, and note the notch on the wireless module should meet the break of the connector.



Connector break

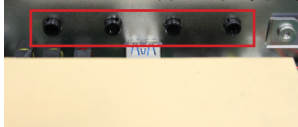
Fully plug the module.

- Press down the module and fix the module in place using two screws.



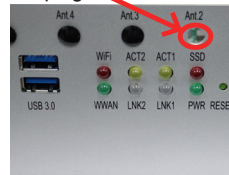
- Remove one plastic plug from the computer's front panel to make an antenna hole. Keep the plastic plug for any possible restoration in the future.

Antenna holes stopped up by plugs



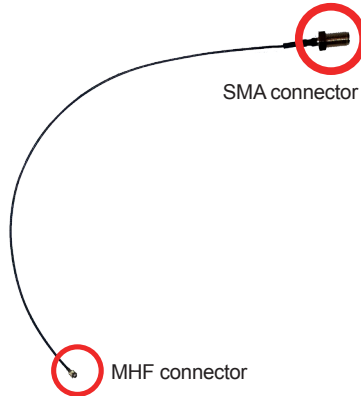
a view from the inside of the computer

an antenna hole w/o the plug



a view outside the computer

9. Have the RF antenna. The antenna has an SMA connector on one end and an MHF connector on the other.

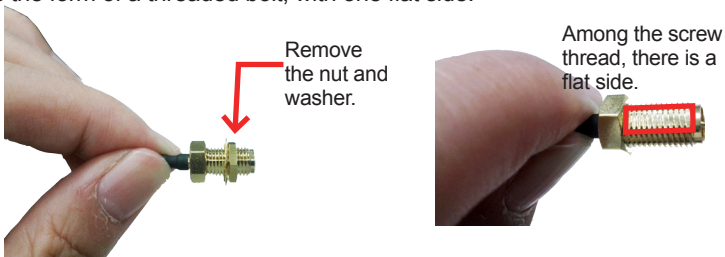


10. Connect the RF antenna's MHF connector to the Wi-Fi module's "MAIN" connector.

Connect the RF antenna's MHF connector to the 3G module's "MAIN" connector.



11. From the other end of the RF antenna, which is an SMA connector, remove the washer and the nut. Save the washer and nut for later use. Note the SMA connector has the form of a threaded bolt, with one flat side.



- Pull the SMA connector through the above mentioned antenna hole. Note to meet the aforesaid flattened side with the antenna hole's flat side.

Arrange the flat side of the SMA connector to meet the flat side of the antenna hole.

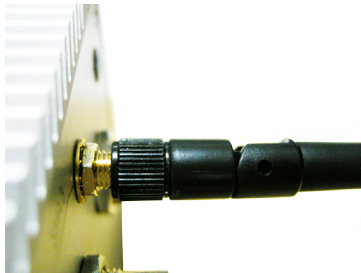


- Mount the washer first and then the nut to the SMA connector. Make sure the nut is tightened.



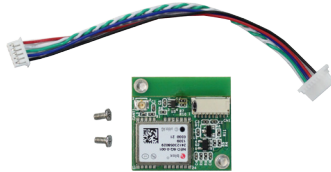
Mount the washer and the nut to the SMA connector. Tighten the nut.

- Have an external antenna. Screw and tightly fasten the antenna to the SMA connector.

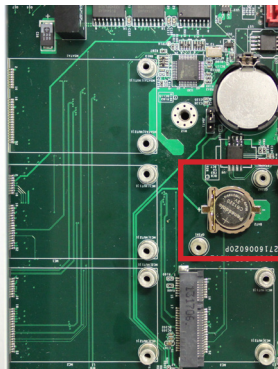


## Appendix C: GPS Module Hardware Installation

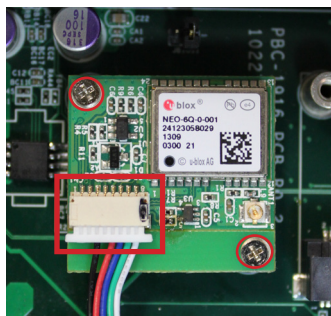
1. GPS Module kit is consist of GPS module, 2 screws, and one cable.



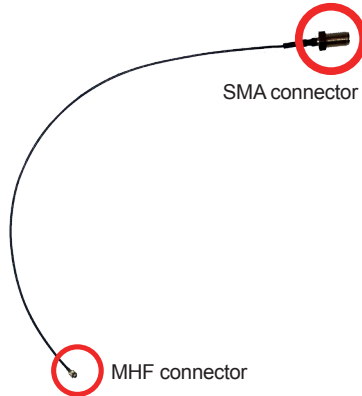
2. Please refer to [4.1.4. Disassemble SSD bracket on page 49](#)
3. Locate the GPS screw hole on the mainboard



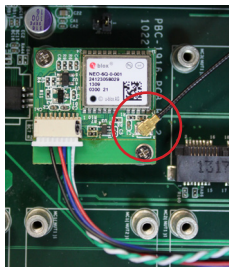
4. Fasten 2 screws to fix the module and connect the cable to the connector on the module.



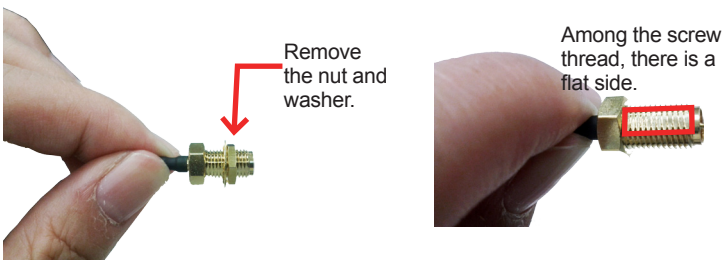
5. Have the RF antenna. The antenna has an SMA connector on one end and an MHF connector on the other.



6. Connect the RF antenna's MHF connector to the GPS module's "ANT1" connector.



7. From the other end of the RF antenna, which is an SMA connector, remove the washer and the nut. Save the washer and nut for later use. Note the SMA connector has the form of a threaded bolt, with one flat side.



- Pull the SMA connector through the above mentioned antenna hole. Note to meet the aforesaid flattened side with the antenna hole's flat side.

Arrange the flat side of the SMA connector to meet the flat side of the antenna hole.

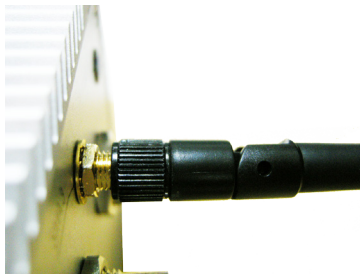


- Mount the washer first and then the nut to the SMA connector. Make sure the nut is tightened.

Mount the washer and the nut to the SMA connector. Tighten the nut.



- Have an external antenna. Screw and tightly fasten the antenna to the SMA connector.



---

This page is intentionally left blank.