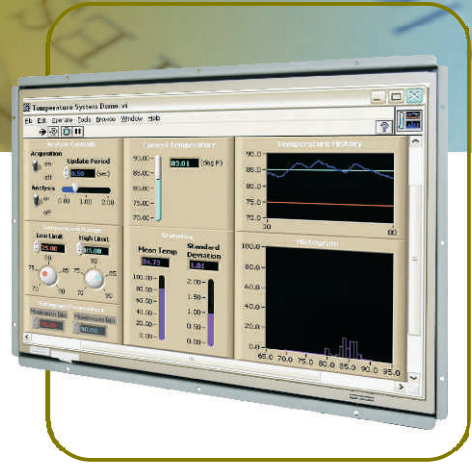


Open Frame LCD

Open Frame LCD



19" Wide (16:10)

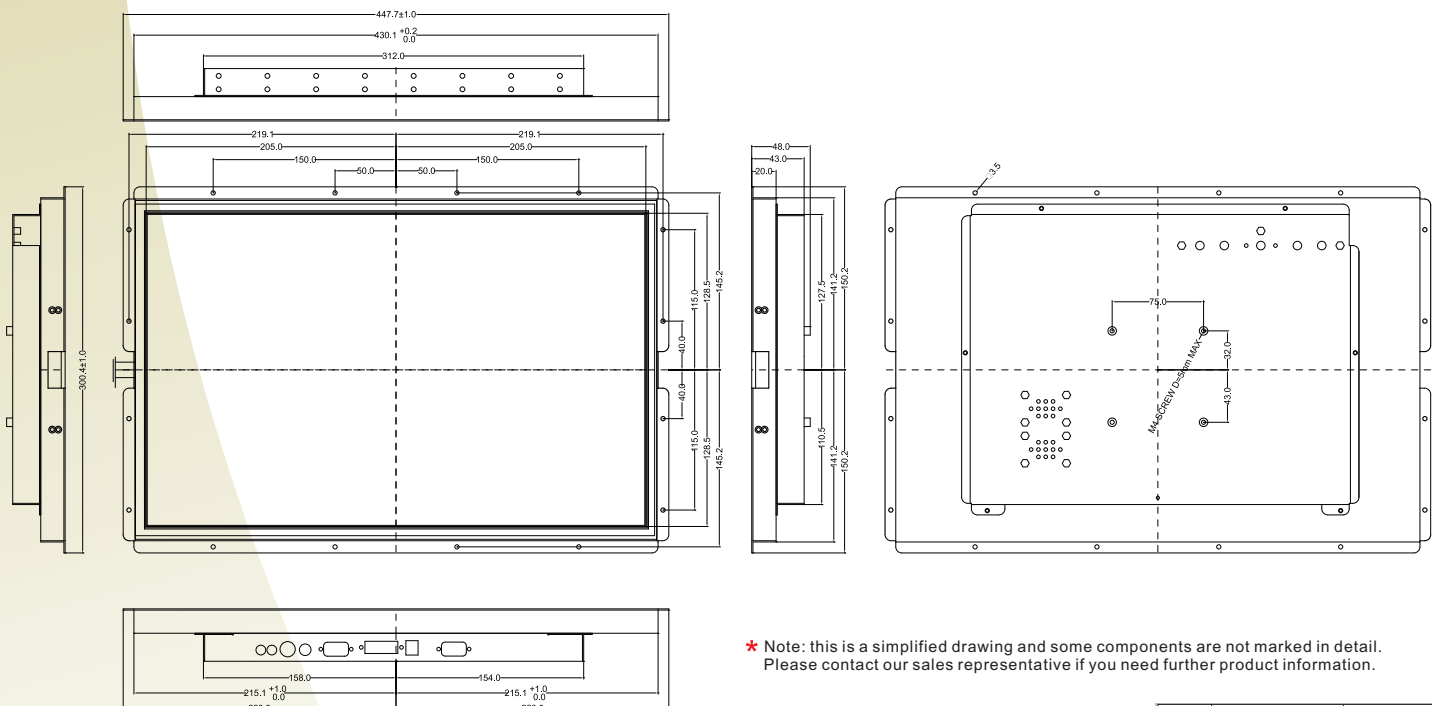
Specifications



| | |
|--------------------------------|---|
| Model Name | W19L300-OFM3(LED) |
| Viewable Size Image | 19" Wide(16:10) |
| Active Display Area(mm) | 408.2(H) x 255.2(V) |
| Pixel Pitch(mm) | 0.284(H) x 0.284(V) |
| Number of Pixels | 1440x900 |
| Contrast Ratio | 1000:1(typ.) |
| Display Color | 16.7M |
| Brightness(cd/m ²) | 250(typ.) |
| Viewing Angle(CR>=10) | -85~85(H);-80~80(V) |
| Synchronization Range | |
| Horizontal/Vertical | 31.5~60.0KHz/60~75Hz |
| Recommended Resolution | 1440x900@ 60Hz |
| Signal Connector | 15 pin D-Sub |
| Power Source | 12V DC in, with External AC to DC Adapter (100~240V AC) |
| Power Consumption | 23W typical,normal operation |
| Power Management | VESA DPMS Compliant |
| Plug & Play | VESA DDC 1/2B |
| Optional Video Input | S-Video/ Composite |
| Optional DVI Input | Yes |
| Optional Touch Screen | 5-Wire Resistive Touch |

Remarks:W19L300 series= VGA input only
W19L340 series= VGA+Video Input

Mechanical Drawing:W19L300-OFM3 (5-Wire Resistive)



| Rev. | Reasons | Revised Date |
|------|----------------|--------------|
| 1.1 | Drawing change | Feb-20-12 |
| 1.2 | Spec change | Nov-14-12 |
| 1.3 | Pic change | Jul-16-13 |