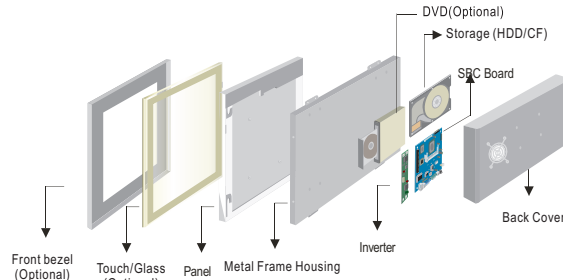
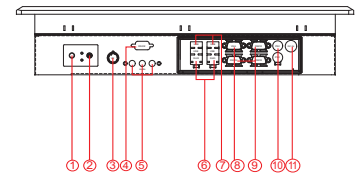


R17IB7T-PMM1 17" Panel PC (Intel Celeron Bay Trial-M N2930 1.83GHz)

Mechanical Design



Mechanical design

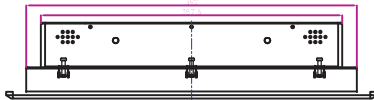


1. Power On Button
2. Power Reset Button
3. Brightness Adjustment Knob
4. RS-232 Conn.(Optional)
5. Audio
6. LAN
7. USB(1 x 3.0, 3 x 2.0)
8. VGA
9. RS-232 Conn.
10. PS/2
11. DC-IN Lockable Power Jack

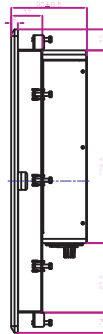
Fully Integrated I/O

**Panel Mount
(8 mm front bezel)**

FRONT VIEW

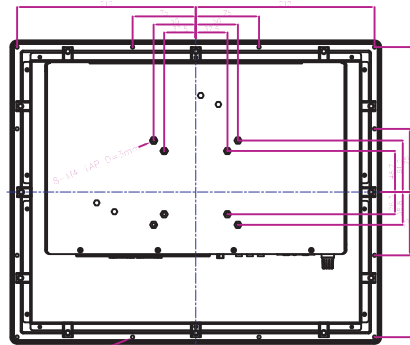


SIDE VIEW

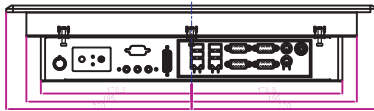
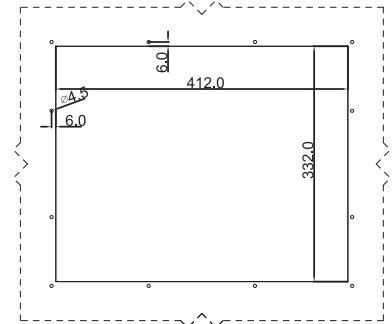


Dimensions

BACK VIEW



IP65 CUT OUT



BOTTOM VIEW

- * Measurements shown in mm
- * Tolerance of all dimensions is shown as follow 0~30 mm ± 0.1 mm, 30~50 mm ± 0.15 mm, 50~120 mm ± 0.2 mm, above 120 mm ± 0.25 mm
- * Note: this is a simplified drawing and some components are not marked in detail. Please contact our sales representative if you need further product information.

Specifications

System :

- CPU : Intel® Celeron Bay Trial-M N2930 1.83GHz
- Memory Slot : DDR3L -1066 MHz SO-DIMM x 2 Slot (MAX to 8GB)
- System Chipset : Intel Atom SoC Integrated
- IDE/SATA : 1 x SATA II
- LAN : Intel WG82574L GbE LANx2
- Audio Codec : Realtek ALC886 HD Audio Codec

Input / Output :

- Serial Ports : 2 x RS232, 1 x RS232/422/485
- USB Ports : 1 x USB 3.0, 3 x USB 2.0
- Keyboard / Mouse : 2 x PS/2
- Ethernet : 2 x RJ45-10/100/1000 Mbps
- VGA : 1 x VGA (female)
- Audio : Line-out, Line-in, Mic in

• Default setting:RS232

Expansion Slot :

- 2 x Mini PCIe (1 for WiFi, 1 for 3G Module)
 - 1 x eDP by 2x10 DF-13 connector
- * A customized housing is needed if you would like to have the PCI expansion.

Power Specifications :

- Power Input : 12V DC IN (Lockable Power Jack)

Accessories :

- External Adapter : 110~230V Ac-in power adapter

Panel Spec :

- Size/Type : 17" TFT
- Resolutions : 1280 x 1024
- Brightness : 300 cd/m² (typ.)
- Contrast Ratio : 1000 : 1(typ.)
- Viewing Angle : -85~85(H);-80~80(V)
- Max. Colors : 16.7M (6bits+FRC)

Environment Considerations :

- Operating Temperature : 0 deg.C to 45 deg.C
- Operating Humidity : 30% to 90% (non condensing)

OS BSP / Driver Support :

- Support Windows embedded 8 / Windows embedded 7

Order Options :

- | | |
|-------------------------------------|-------------------------------|
| Mechanical : Open Frame | Storage : 2.5" HDD/ mSATA SSD |
| Panel Mount(8 mm bezel) | RAM : DDR3 1066 Max 8GB |
| IP65(8 mm bezel) | OS : Windows 7 embedded / |
| Touch : 5-Wires Resistive(Optional) | Windows 8 embedded |
| AR Glass(Optional) | (Optional) |

(A customized housing is needed if you have demands of SAW/IR/IT/SC touch)



Rev.	Reasons	Revised Date
1.0	First release	Apr-01-14
1.1	Spec change	Apr-15-14

Note: All Specifications are subject to change without prior notice!

Revised Date:04/15/2014