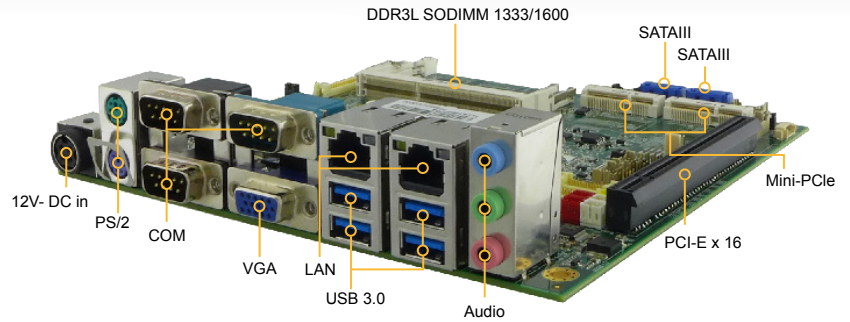


IH70 Mini-ITX SBC

Intel® 4th Generation Core™ i7/i5/i3 Processor, Mini-ITX Motherboard W/DC 12V Input

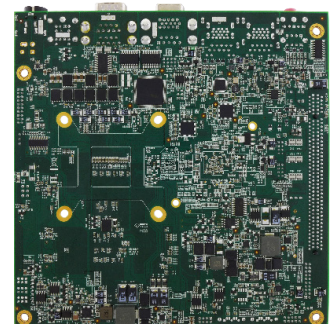
Features

- Socket G3 for Intel® Core™ i7 / i5 / i3 Processor
- Mini ITX Form Factor (170 x 170 mm)
- DDR3L 1333/1600MHz dual-channel SO-DIMM support up to 16 GB
- 12V Single Voltage Power Input
- Multi display supports VGA / dual-channel 24-bit LVDS (eDP)/ HDMI / DVI

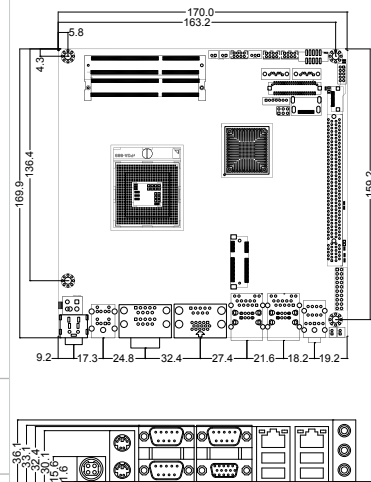


Specification		
System Specification	CPU	Socket G3 (rPGA947) Intel® i7/ i5 / i3 processor
	System Memory	Two DDR3L 1333/1600MHz SO-DIMM (max. 16GB)
	System Chipset	Intel® 8 series Chipset QM87
	BIOS	AMI SYSTEM BIOS
	Super IO Chipset	FINTEK F81867
Display Specification	Display Interface	Intel® HD Graphics 4600 Supports DirectX 11 and OpenGL 4.0
		Analog monitor resolution up to 2048 x 1536 @75Hz
		HDMI/DVI interface, supports max. resolution 2560 x 1600 @60Hz
		Supports Dual-channel 18/24-bit LVDS max resolution 1920 x 1200 @60Hz , co-lay eDP(by BOM Option)
Audio		Realtek ALC886 HD codec (Line-in, Line out, Mic-in)
Ethernet		Intel® Ethernet Controller I211-AT + Intel® Gigabit Ethernet PHY I218-LM
I/O Ports Specification	Rear I/O	4 x USB 3.0 2 x RS-232 (COM3, COM4) 1 x RS-232/422/485 (COM1) 2 x RJ-45 for LAN 1 x VGA 1 x Audio Jack (Line-in, Line-out, Mic-in) 2 x PS/2 (KB/MS) 1 x (+12V) DC-in Power Jack
	Internal I/O	3 x RS-232 (COM2.COM5.COM6) 2x5 pin-header 4 x USB 2.0 2 x USB3.0 1 x DVI/HDMI by DF-13 20-pin connector 1 x LVDS by DF-13 40-pin connector 1 x eDP by DF-13 20-pin connector(Optional) 2 x SATA III 1 x 2x4-pin wafer for SATA power 2 x 2-pin pin-header for speaker (with Amplifier): Left, Right 1 x 10-pin pin-header for DIO 1 x 3-pin digital panel backlight brightness controller 1 x 7-pin inverter 1 x 2x2-pin DC-in 12V connector 1 x 10-pin wafer for Front Panel(2x5) 2 x 2-pin wafer for +5V external power (Red) 1 x 2-pin wafer for 12V external power (Yellow) 1 x 3-pin pin-header for CPU Fan (smart fan) 1 x 20-pin box header for LPT Port 1 x 6-pin wafer for external SIM Card daughter board
	Expansions Slot	1 x Mini PCIe Slot (for mSATA SSD, Support SATA II) 1 x Mini PCIe Slot (for Full size module) 1 x Mini PCIe Slot (for half size Wifi module) 1 x PCIe (x16) slot
Mechanical and Environment	Dimensions (W x L)	170 x 170 mm
	Operating Temperature	0 ~ 60°C
	Operating Humidity	5% ~ 95%, non-condensing
Power Management	Power Supply	+12V Power Input
Packing List		IH70-100 Single Board Computer IH70 Manual & Driver CD V1.0

Bottom View



Board Dimension



Rev.	Reasons	Revised Date
1.0	First release	Apr-23-2014